

Strong Families Make Strong Communities

MMA Annual Meeting
January 19, 2018




June David-Fors, LICSW

Town of Northborough





Town of Northborough Demographics

- 2016 Population: 14,895
 - 2015 Labor Force: 7,920
 - Form of Government: Town Administrator
 - Five-Member Board of Selectmen
 - FY2017 Tax Rate per Thousand: \$17.39
 - FY2017 Municipal Budget: \$60,658,656
- 

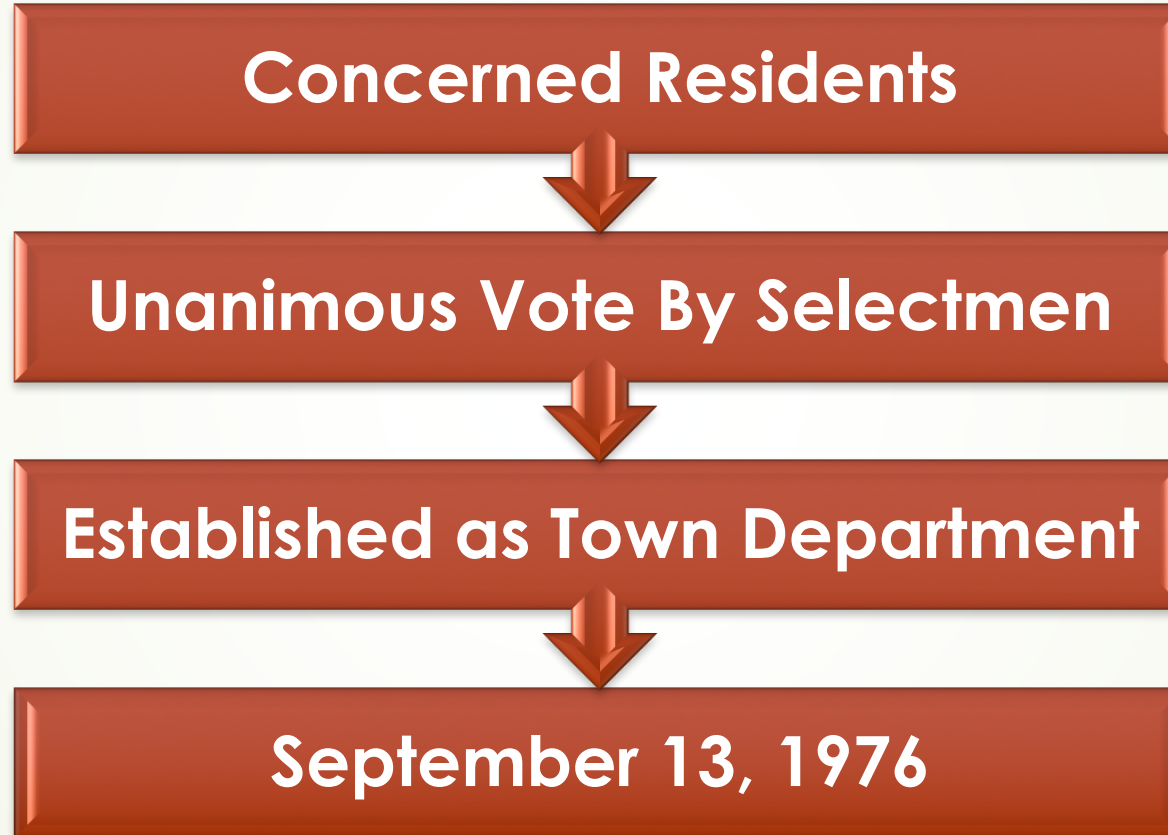
Northborough Family & Youth Services



*Serving the Town of
Northborough Since 1976*




Brief History . . .





Our Mission . . .

- To identify and respond to the Town's human service needs to enhance the quality of life for Northborough individuals, youth and families
 - Our services are shaped by community need and developed through ongoing collaboration with the Youth Commission, town departments, schools and several other organizations
- 



Who We Are Today . . .

- Town's community-based human service agency
- Centralized source for human service needs
- Serving over 920 residents annually
- Instrumental in creating new town resources:
 - Northborough Extended Day Programs (*affordable child care*)
 - Northborough Food Pantry (*free food for residents*)

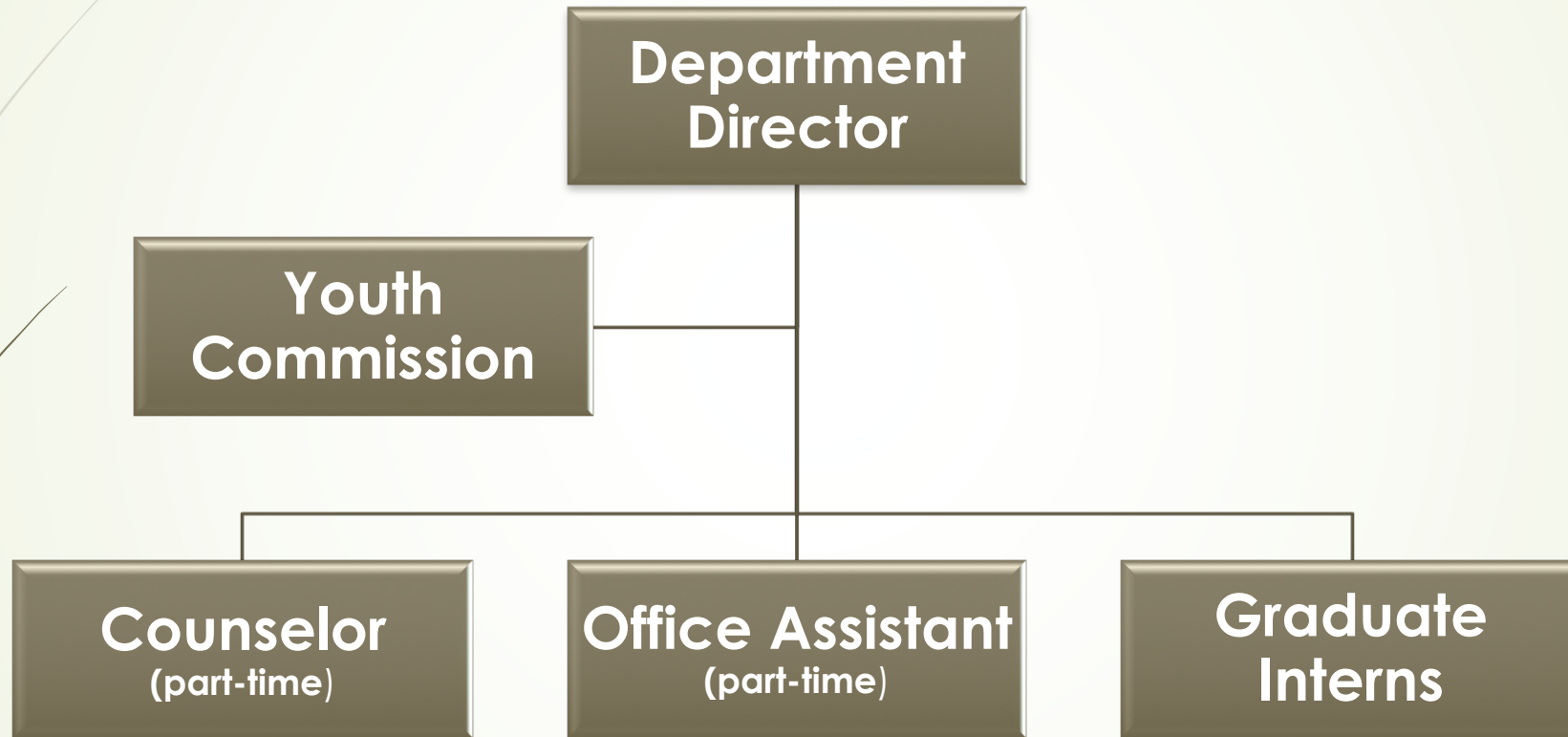


Message from John Coderre, our Town Manager

“As a Town Administrator I appreciate having professional staff on hand to help manage crisis situations and provide appropriate follow-up and referral assistance to residents.

All too often people going through a difficult time either lack the capacity to advocate for themselves, or simply don't know where to begin. FYS can help them navigate the system to get the resources they need to start moving in a positive direction.”

Organizational Chart . . .



Programs: *Mental Health Services*

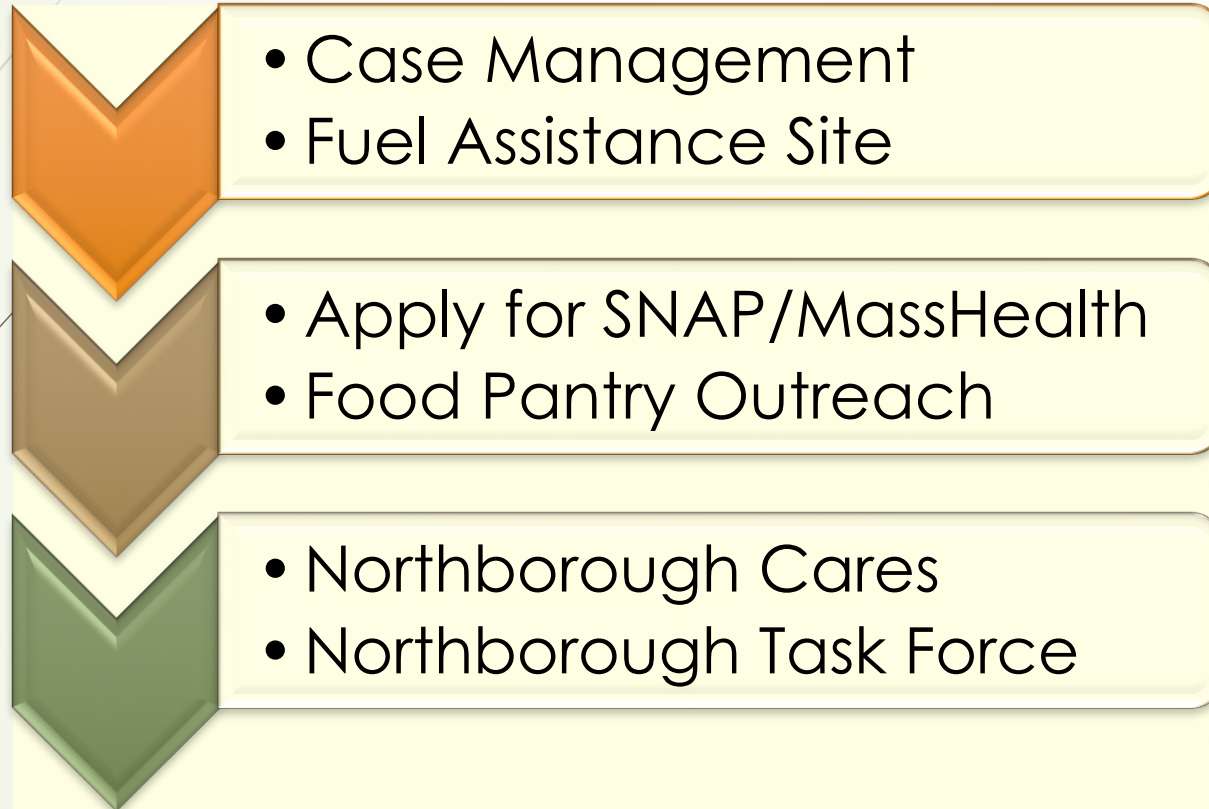
- Child/Adolescent Therapy
- Individual/Family Therapy

- Grief Support Group
- Parent Consultation

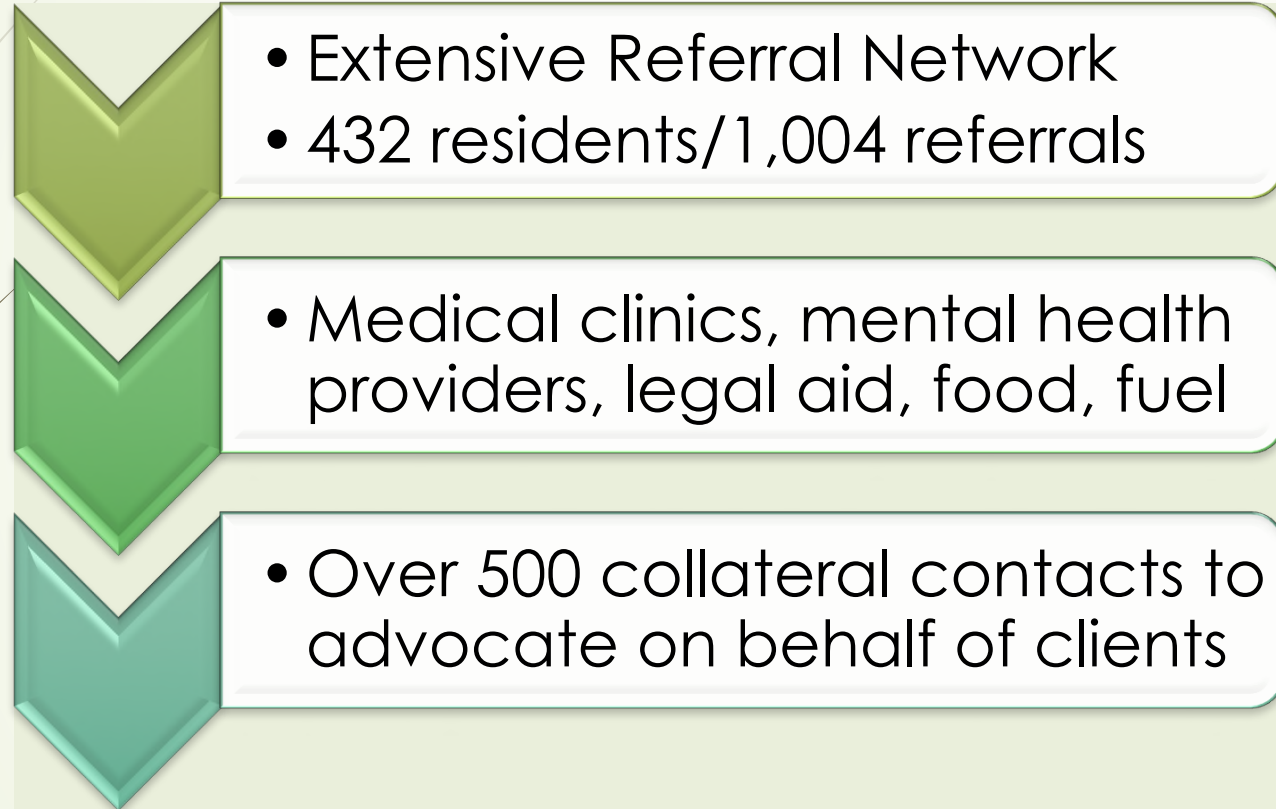
- Crisis/Trauma Response
- Mental Health Assessments



Programs: *Basic Health Needs*



Programs: Information & Referrals



Partnership Programs . . . Page 1.

Northborough Extend Day Programs:

- After School Day Programs
- Shared Office Space & Personnel

Northborough Public Schools:



- Onsite Therapy to Students
- Family Success Partnership
- District Wellness Committee

Partnership Programs . . . Page 2.

Helping Hands Association:

- Holiday Gifts
- Thanksgiving Meal
- Back Pack Program
- Emergency Financial Aid
- Medical Equipment Loan Program



Northborough Food Pantry


Partnership Programs . . . Page 3.

- Graduate Internship Site
- Special Benevolent Fund
- TEAMWORKS Scholarships
- Northborough Rotary Club
- Interfaith Clergy Association
- Friends of Families in Transition





Regional & Town-Wide Partnership Initiatives

- MetroWest Substance Abuse Prevention Coalition
 - Northborough Cares and the Town Task Force
 - Childhood Obesity: Building a Healthy Northborough
- 



Here is the very good news for towns . . .

It is an investment well worth your while . . .

FY2018 BUDGET – Family & Youth Services		
PERSONNEL:		139,162
Director	1.0 FTE	
Counselor	.48 FTE	
Office Assistant	.48 FTE	
Total Full Time Equivalent	1.96 FTE	139,162
EXPENSES:		<u>+ 6,077</u>
TOTAL DEPARTMENT BUDGET:		\$145,239



Contact Information . . .

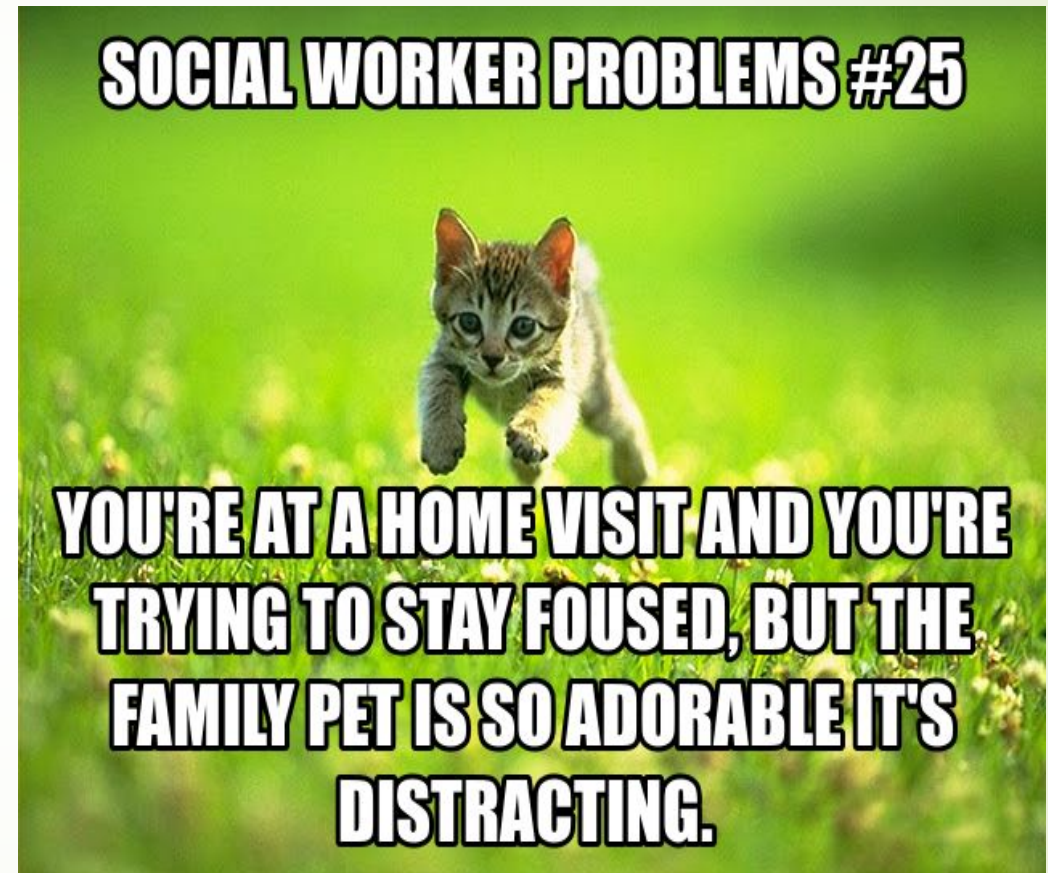
EMAIL: jdavid-fors@town.northborough.ma.us

PHONE: (508) 393-5020

WEBSITE:

http://www.town.northborough.ma.us/Pages/NorthboroughMA_Family/index

Importance of Humor. . .



Importance of Humor. . .

