

Complete Streets Prioritization Tool

A New Resource for Massachusetts Communities



*MMA Conference
January 23, 2016*

Tim Reardon

Director of Data Services

Metropolitan Area Planning Council



Objectives and Focus of the Tool

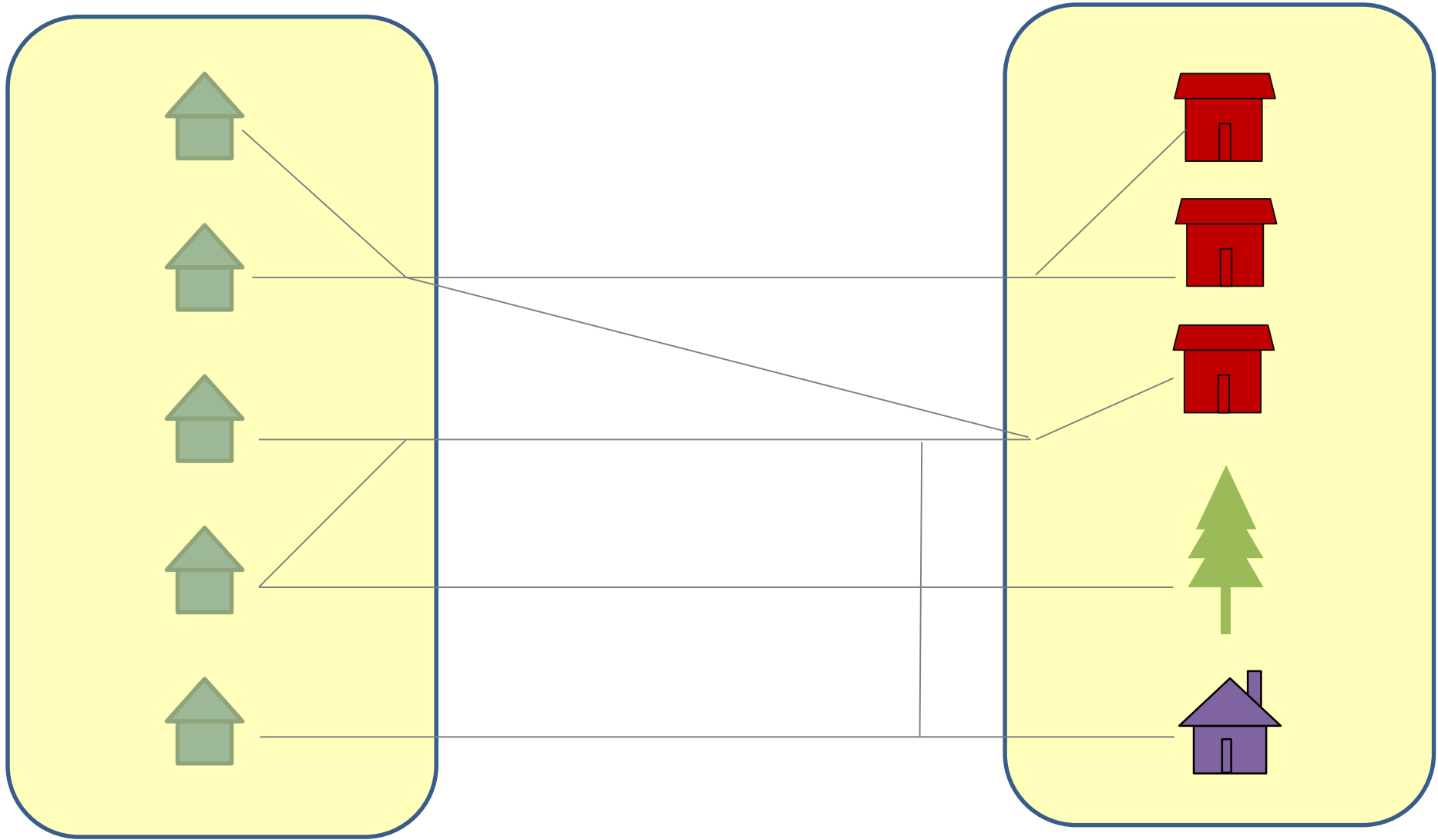
Identify which roadway segments are likely to have **greatest utility for pedestrians and cyclists** traveling to certain local destinations? (“Latent demand”)

- Shopping, Services, Restaurants
- Schools
- Open Space

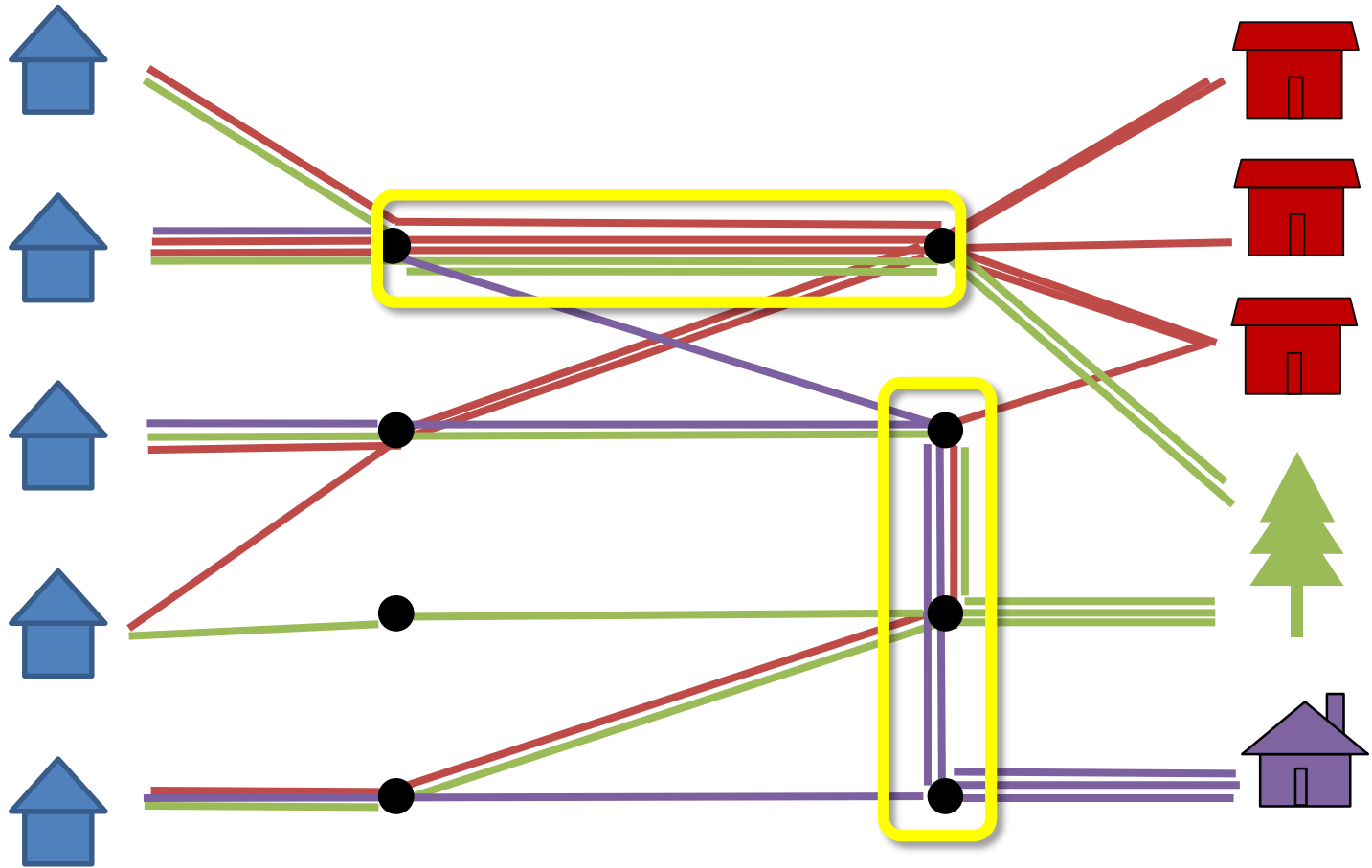
Present information in a way that can inform municipal decisions about capital investments, maintenance, and operations

- Sidewalk construction / reconstruction
- ADA compliance efforts
- Bike lanes
- Snow clearance / enforcement

“Proximity-Based” Approach

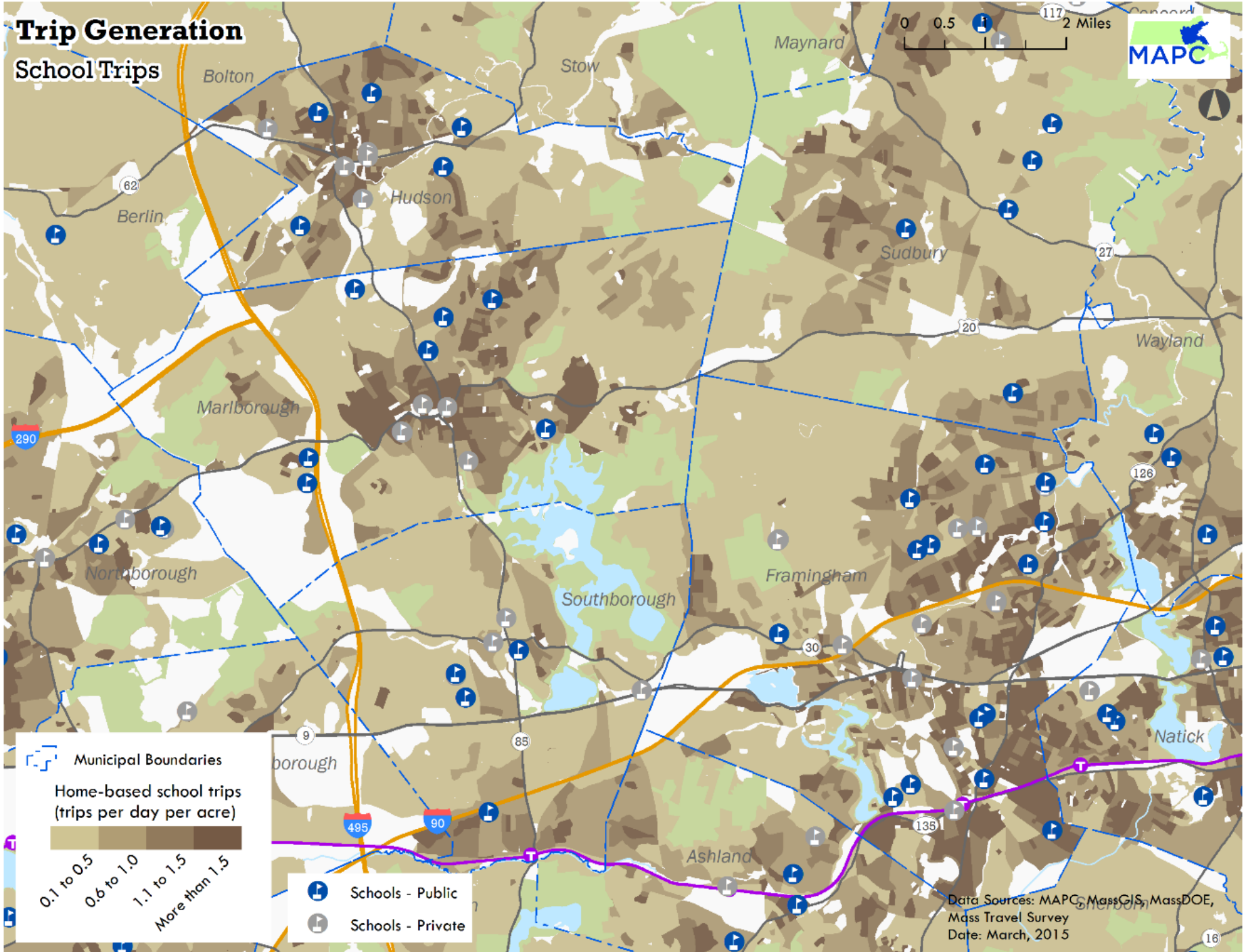


Network Based Approach



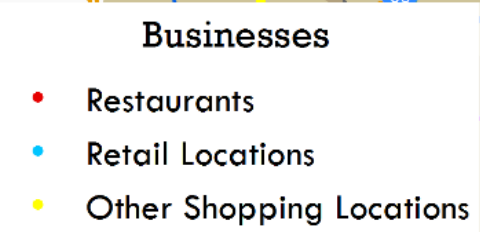
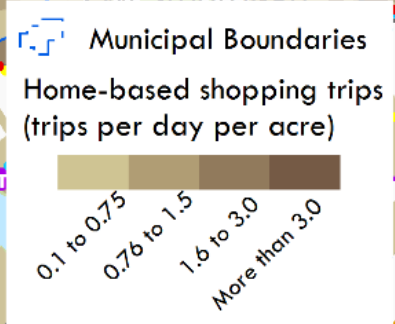
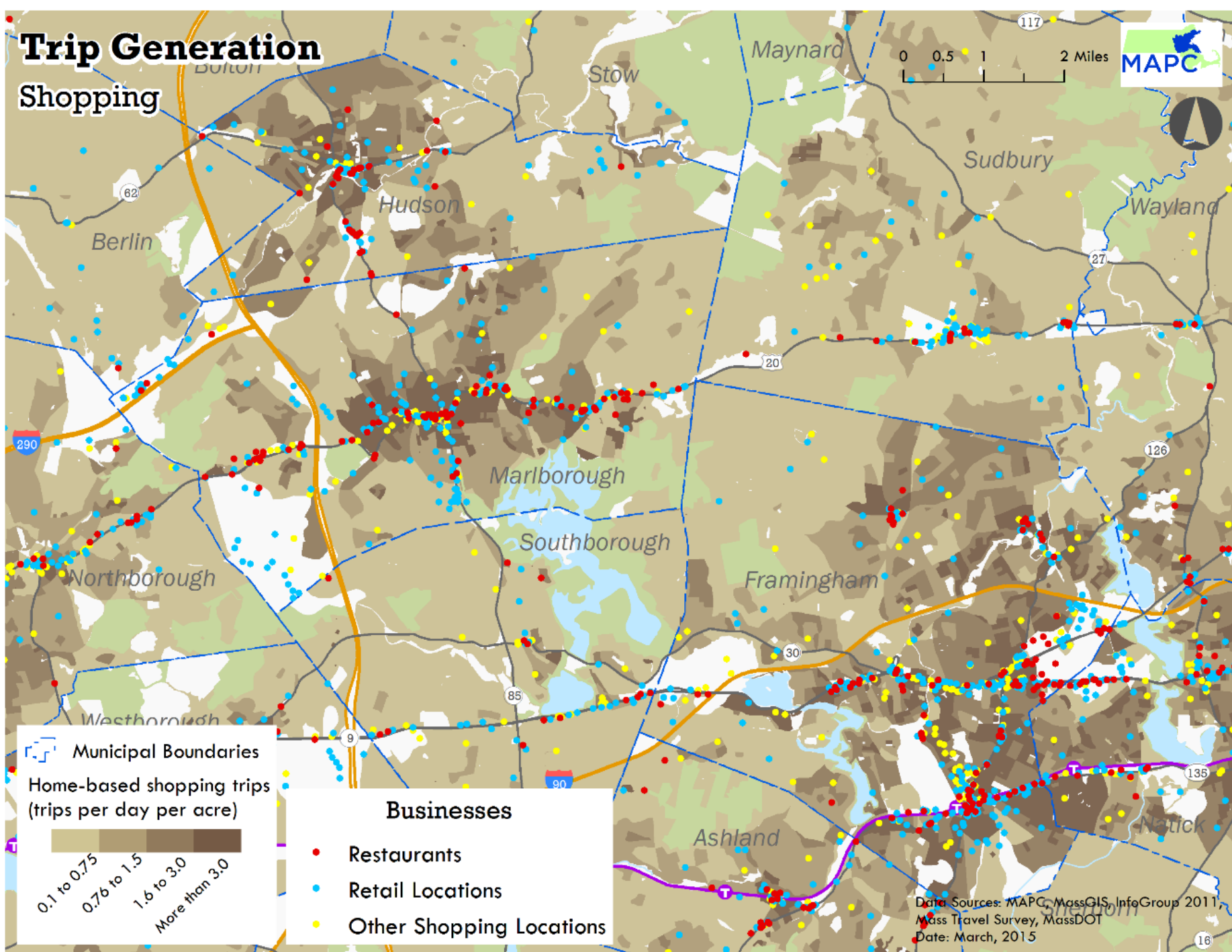
Trip Generation

School Trips



Trip Generation

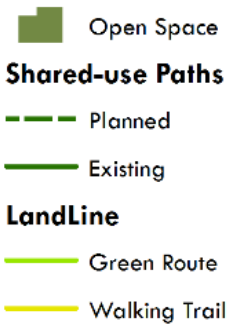
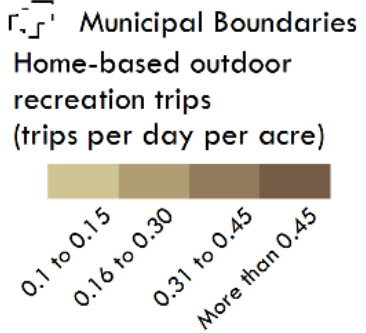
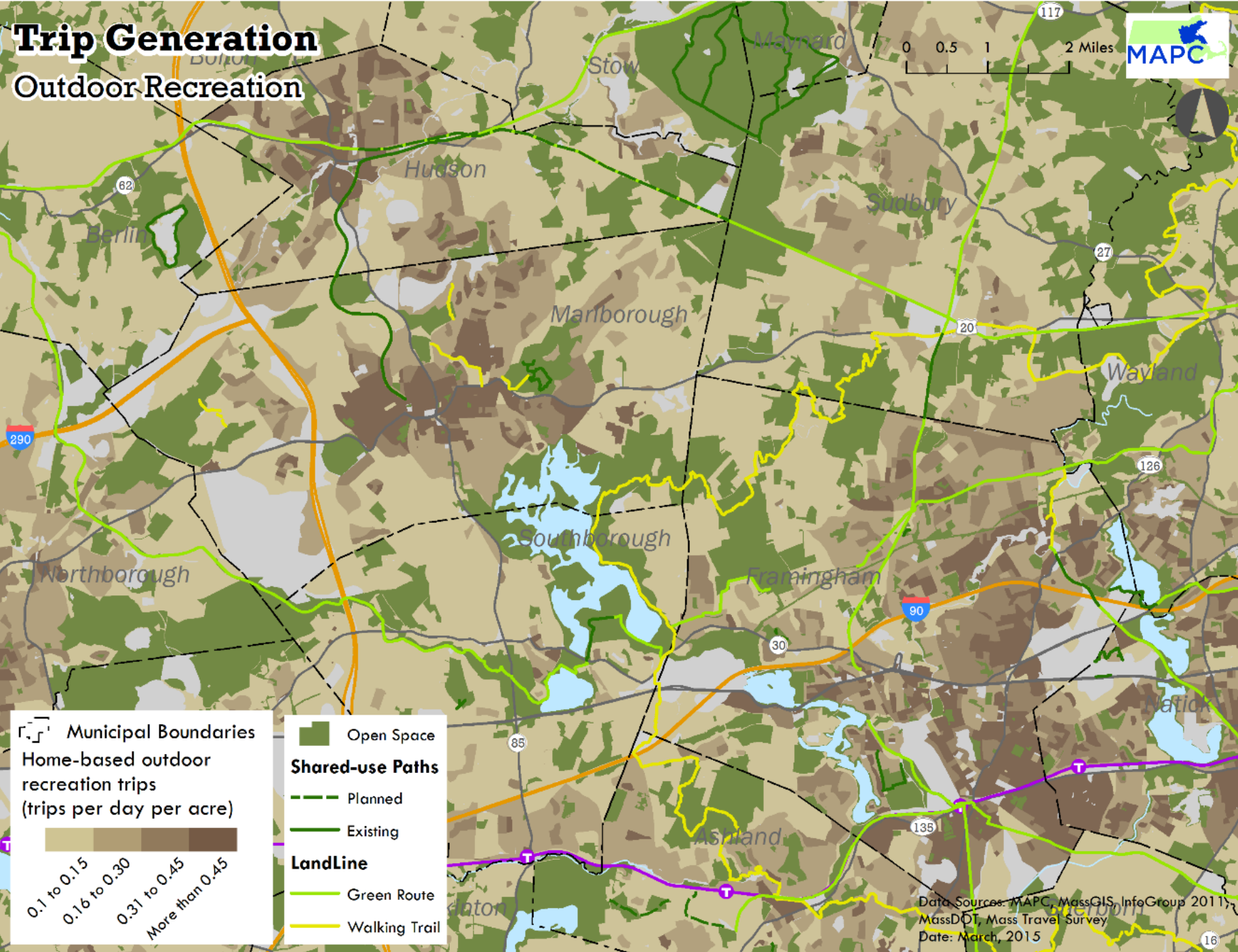
Shopping



Data Sources: MAPC, MassGIS, InfoGroup 2011,
Mass Travel Survey, MassDOT
Date: March, 2015

Trip Generation

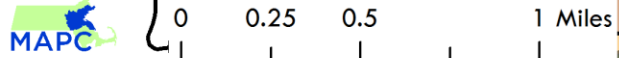
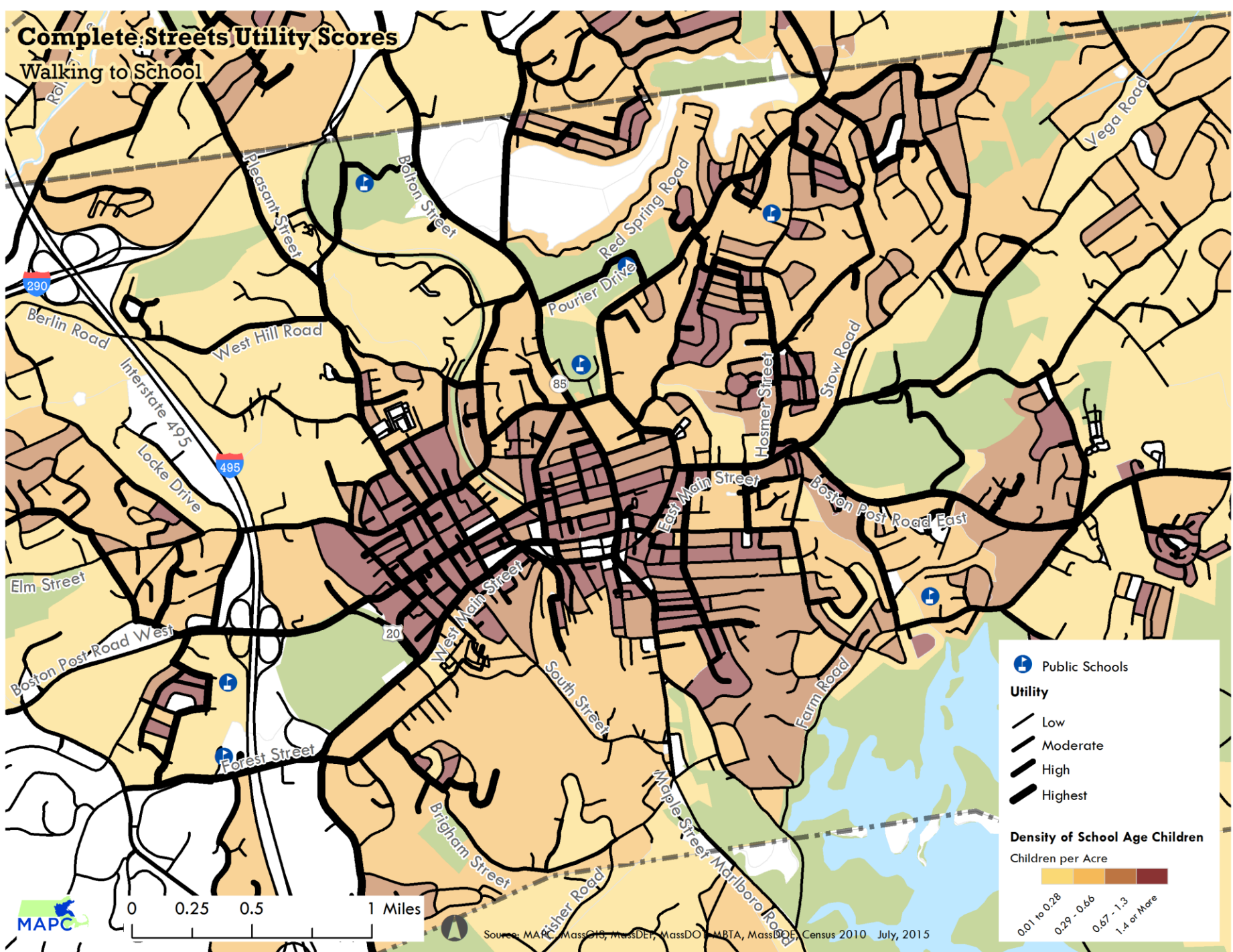
Outdoor Recreation



Data Sources: MAPC, MassGIS, InfoGroup 2011;
 MassDOT, Mass Travel Survey
 Date: March, 2015

Complete Streets Utility Scores

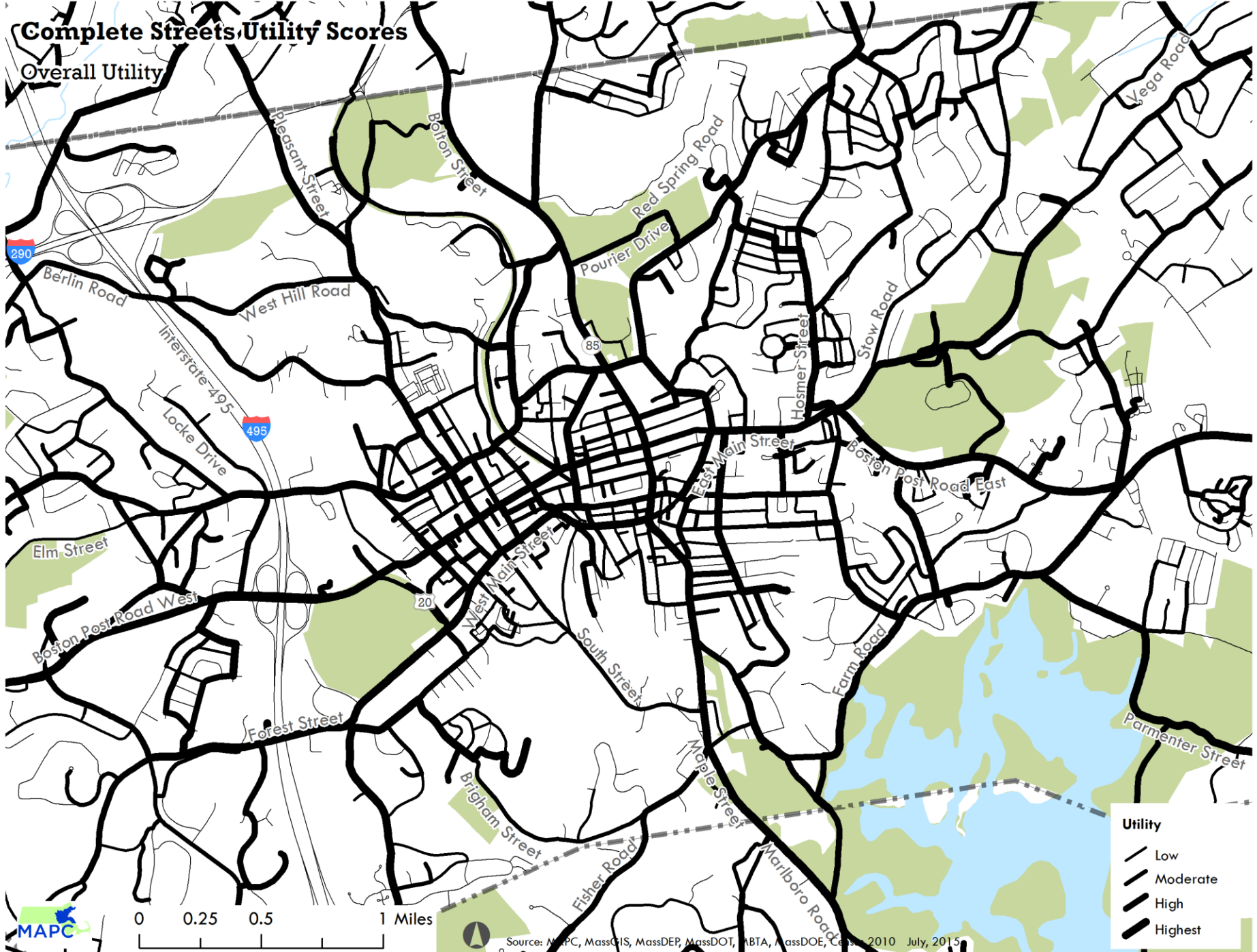
Walking to School



Source: MAPC, MassGIS, MassDEP, MassDOT, MBTA, MassDOE, Census 2010 July, 2015

Complete Streets Utility Scores

Overall Utility



0 0.25 0.5 1 Miles


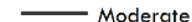



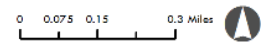
Source: MAPC, MassGIS, MassDEP, MassDOT, MBTA, MassDOE, Census 2010 July, 2015

Complete Streets Utility Scores

Downtown Framingham

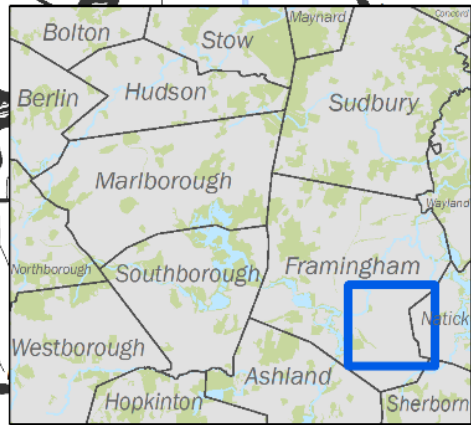
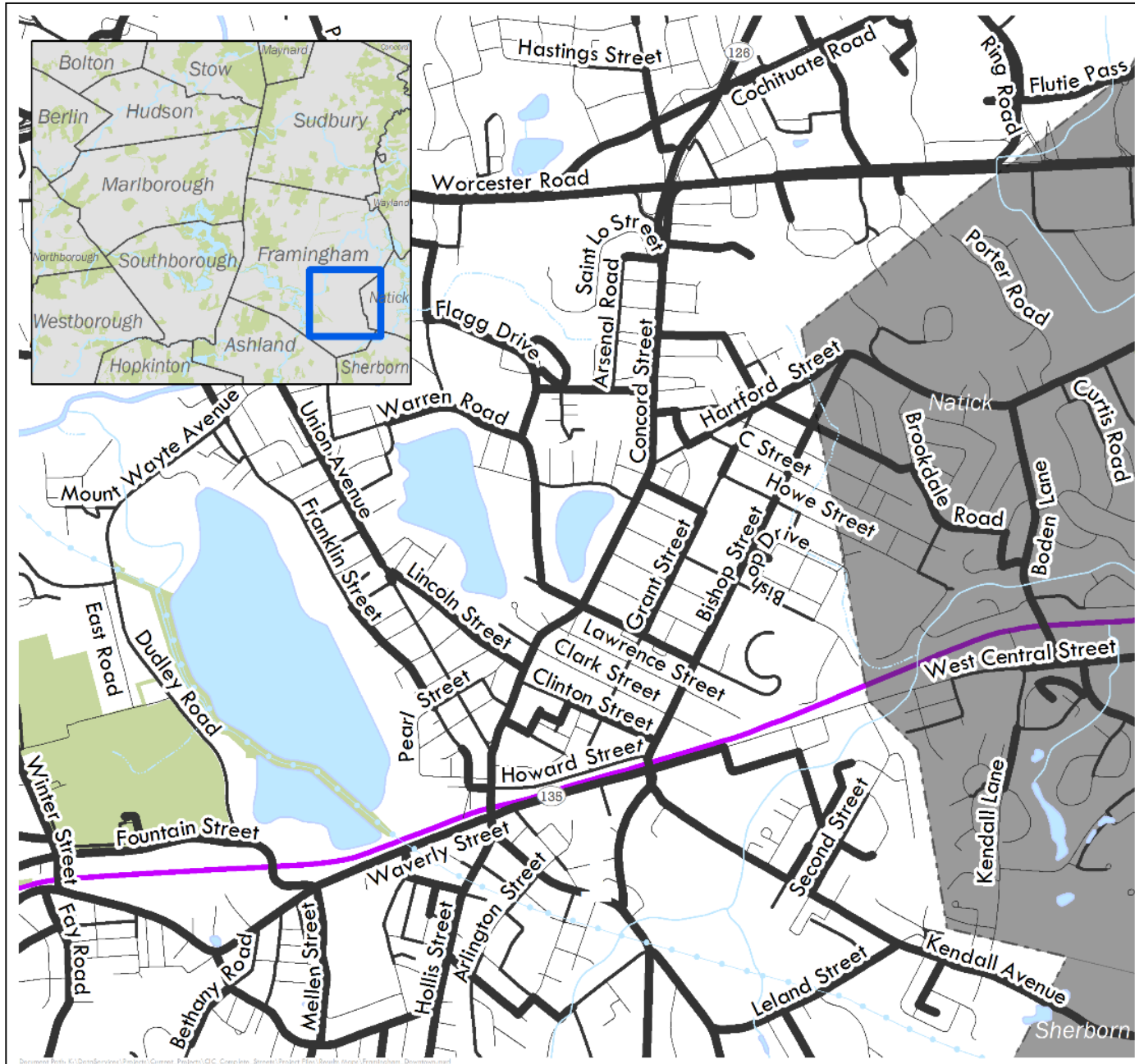
Utility

-  Low
-  Moderate
-  High



Data Sources: Town of Hudson, Town of Framingham, City of Marlborough, MAPC, MassGIS, MassDOT, MassDOE


June, 2015






Download File: K:\Documents\GIS\Complete Streets\Framingham\GIS_Comples_Scores\Project_Framingham\GIS_Comples_Scores\Framingham_Downtown.mxd

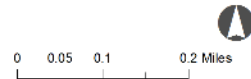
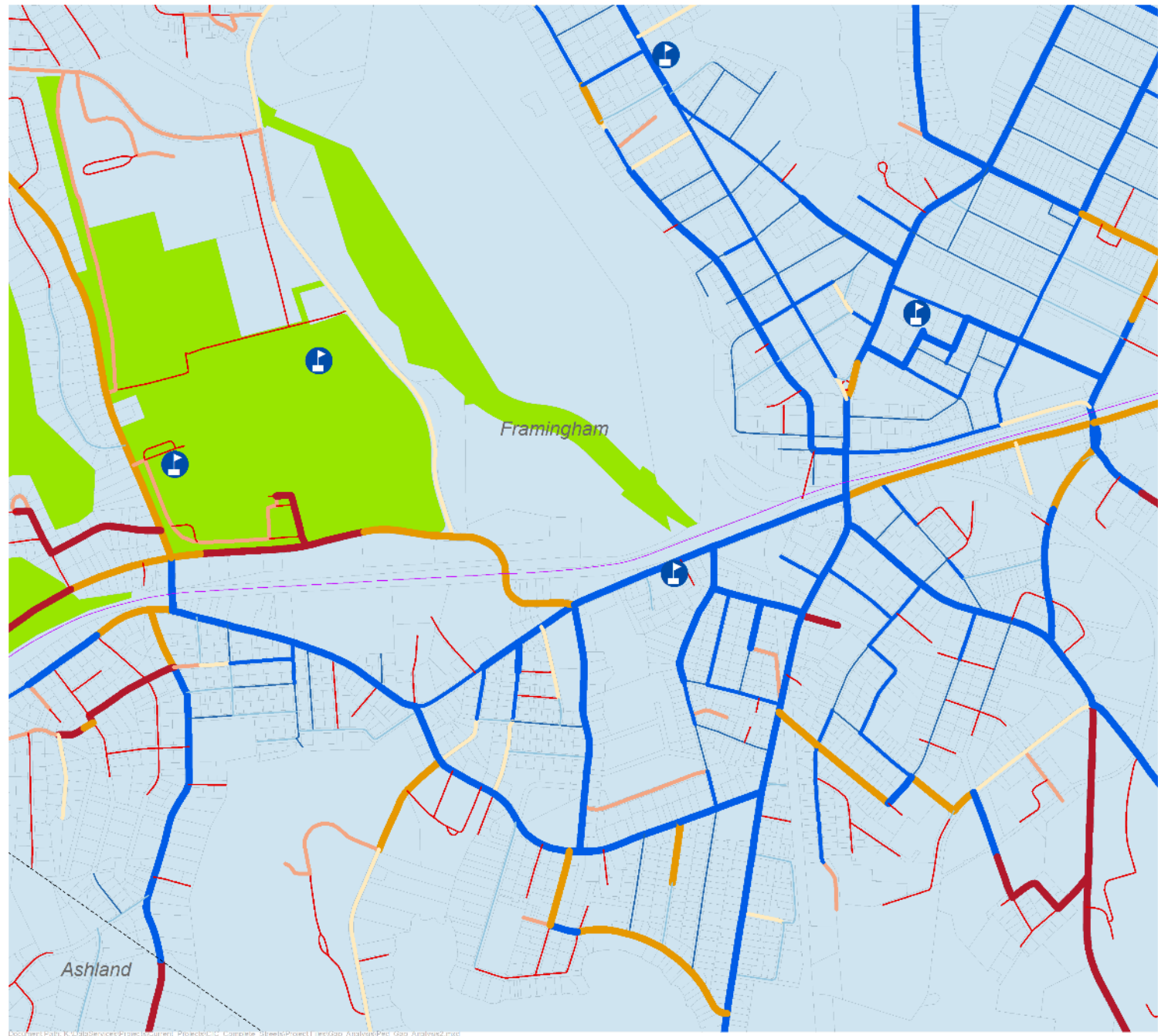
Complete Streets Utility Scores

Sidewalk Gap Analysis

 Schools_2015

Ped_Rank, Sidewalk

-  High, 0
-  High, 1
-  High, 2
-  Medium, 0
-  Medium, 1
-  Medium, 2
-  Low, 0
-  Low, 1
-  Low, 2



The information provided on this map is for general informational purposes only. It is not intended to be used as a legal document or to make any decisions. The information is provided as a service to the community and is not a guarantee of accuracy. The information is provided as a service to the community and is not a guarantee of accuracy.

Maple Street
100 Maple Street, Framingham, MA 01901
Phone: 508.885.1234
Fax: 508.885.1234
www.maplestreet.com

MAPCO
Maple Street
100 Maple Street, Framingham, MA 01901
Phone: 508.885.1234
Fax: 508.885.1234
www.maplestreet.com

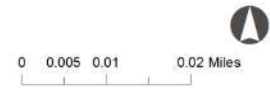


Complete Streets Utility Scores

Sidewalk Gap Analysis

Ped_Rank, Sidewalk

-  High, 0
-  High, 1
-  High, 2
-  Medium, 0
-  Medium, 1
-  Medium, 2
-  Low, 0
-  Low, 1
-  Low, 2



The information depicted on this map is for planning purposes only. It is not intended for legal, boundary, address, regulatory, interpretative, or parcel-level analysis.

Produced by:
Metropolitan Area Planning Council
60 Temple Place, Boston, MA 02111 | (617) 833-0706

Data Sources:
Metropolitan Area Planning Council (MAPC)
Massachusetts Geographic Information System (MassGIS)
Massachusetts Department of Transportation (MassDOT)





Desire Lines:
the best indicator of
sidewalk need

Next Steps / Future Improvements

Add more trip types/destinations

- Transit
- Workplaces

Learn more about potential municipal applications

Move toward fully automated online tool with functionality for local officials to modify inputs and tailor to local conditions.

Thank You!

treadon@mapc.org

