

---

---

---

---

---

---

---



---

---

---

---

---

---

---



---

---

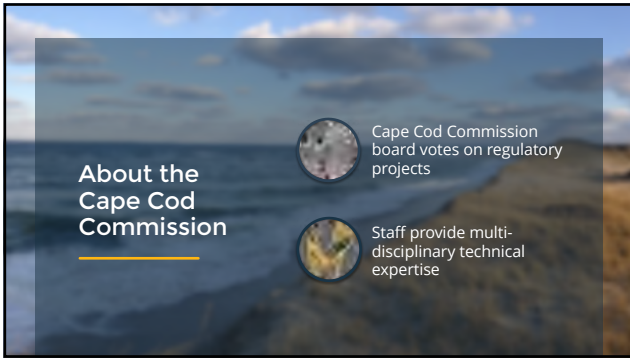
---

---

---

---

---



---

---

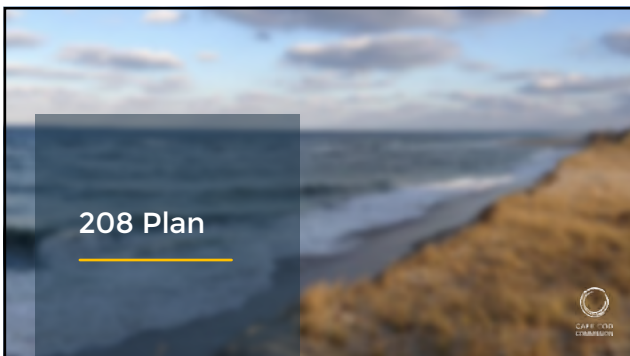
---

---

---

---

---



---

---

---

---

---

---

---



---

---

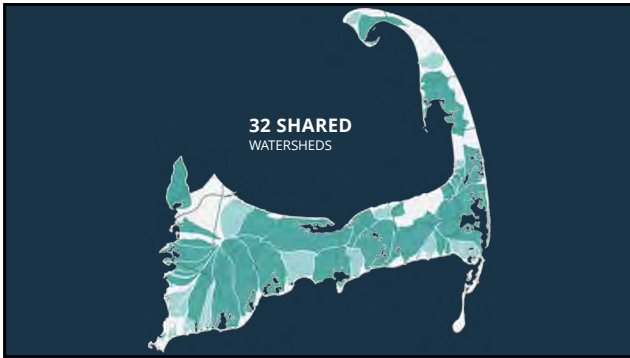
---

---

---

---

---



---

---

---

---

---

---

---



---

---

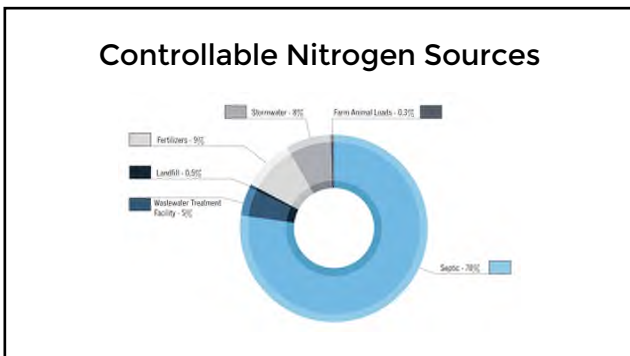
---

---

---

---

---



---

---

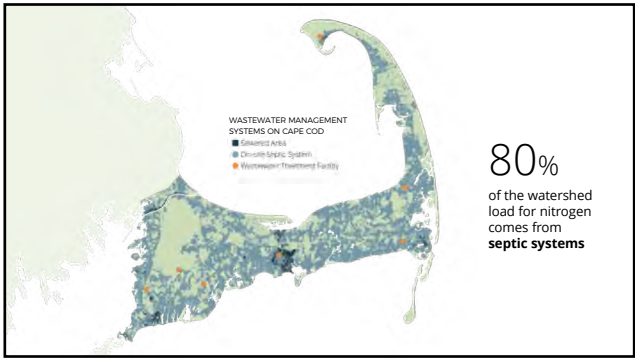
---

---

---

---

---



---

---

---

---

---

---

---



---

---

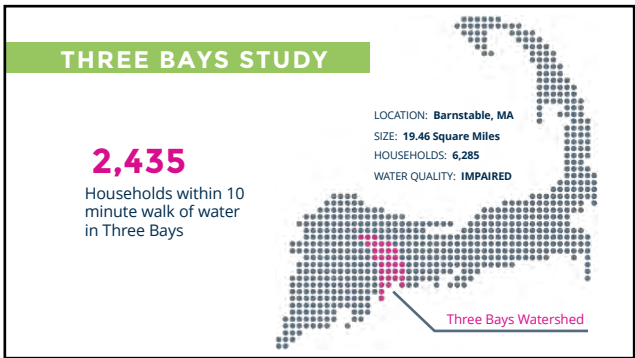
---

---

---

---

---



---

---

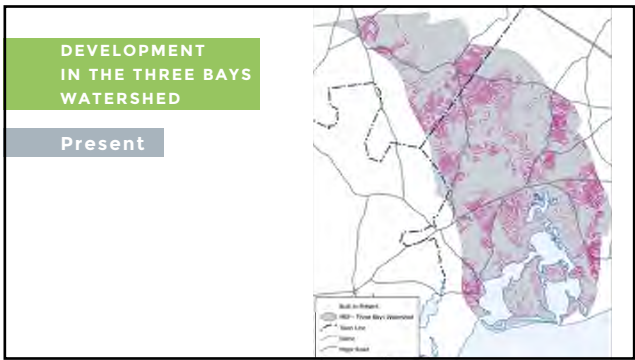
---

---

---

---

---



---

---

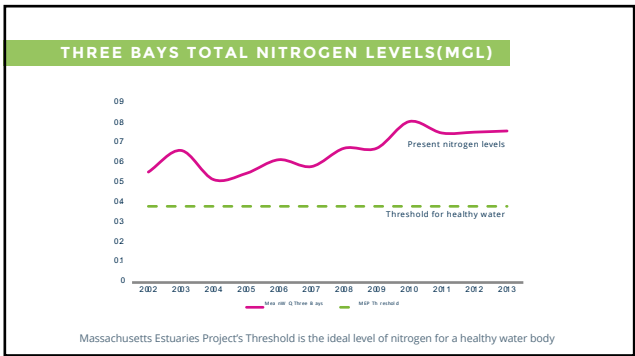
---

---

---

---

---



---

---

---

---

---

---

---

**FINDINGS**

FOR EVERY  
**1% DECREASE**  
IN WATER QUALITY:  
**0.61% DECREASE**  
IN PROPERTY VALUES

---

---

---

---

---

---

---

IF ACTION HAD BEEN TAKEN IN  
2005 TO REDUCE NITROGEN,  
  
AND IF THAT ACTION HAD  
RESULTED IN 3% LESS NITROGEN  
OVER TEN YEARS:

---

---

---

---

---

---

---

AVERAGE HOME VALUE WOULD BE  
**\$16,620 TO \$32,960**  
HIGHER.

---

---

---

---

---

---

---

IN THREE BAYS STUDY AREA  
**ALONE**  
THAT REPRESENTS A  
**\$41-80 MILLION**  
VALUE LOSS

---

---

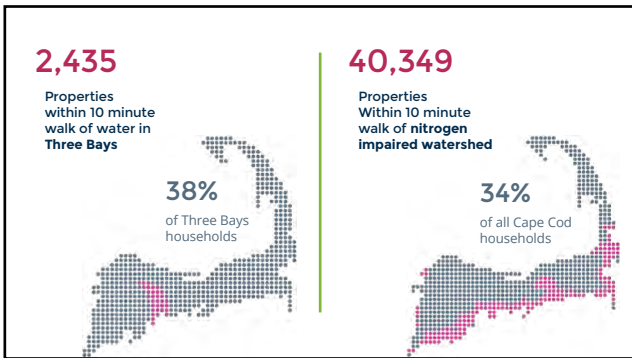
---

---

---

---

---



---

---

---

---

---

---

---

**CAPE-WIDE**  
LOSS COULD BE  
**HUNDREDS OF MILLIONS**  
OVER THE NEXT  
30 YEARS.

---

---

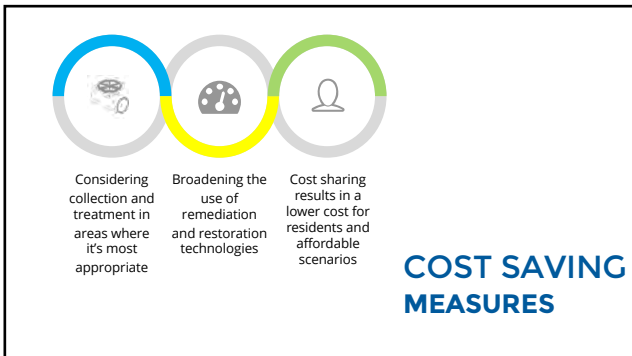
---

---

---

---

---



---

---

---

---

---

---

---

## DECISION SUPPORT TOOLS



WatershedMVP



Fiscal Impact  
Model

---

---

---

---

---

---

---

---

## DECISION SUPPORT



---

---

---

---

---

---

---

---

## DECISION SUPPORT TOOLS



WatershedMVP



Fiscal Impact  
Model

---

---

---

---

---

---

---

---





---

---

---

---

---

---

---



---

---

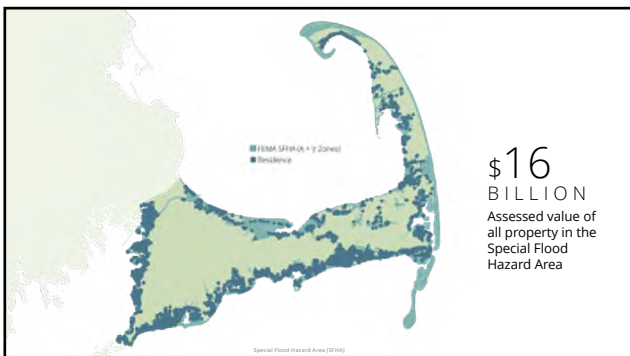
---

---

---

---

---



---

---

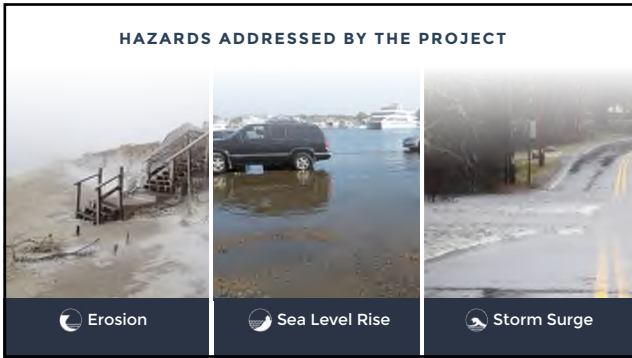
---

---

---

---

---



---

---

---

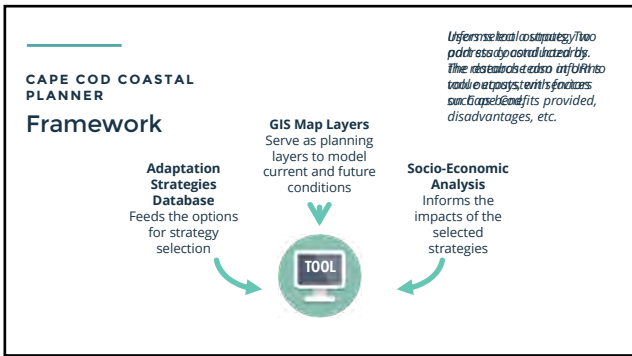
---

---

---

---

---



---

---

---

---

---

---

---

---

**CAPE COD COASTAL PLANNER**

**Ecosystem Services**

**Benefits from nature provided to people:**

- Provision: food, water
- Regulation: controlling water quality
- Support: nutrient cycles, flood regulation
- Cultural: spiritual, recreational benefits

The image shows a coastal wetland with water and grass. The text 'CAPE COD COASTAL PLANNER' and 'Ecosystem Services' is on the left, and the list of benefits is on the right.

---

---

---

---

---

---

---

---




---

---

---

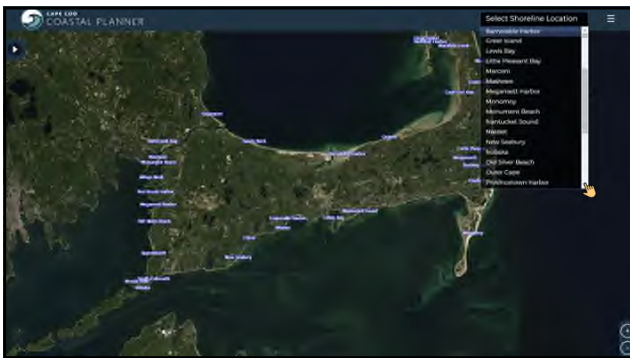
---

---

---

---

---




---

---

---

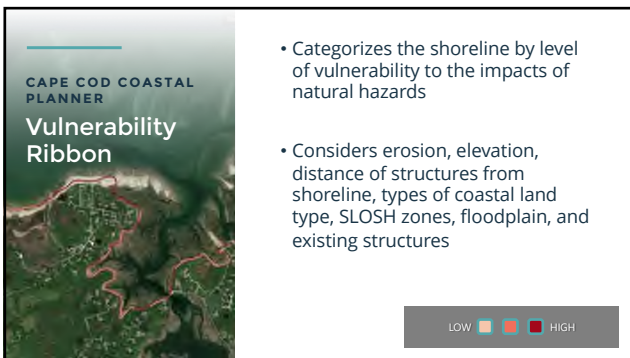
---

---

---

---

---




---

---

---

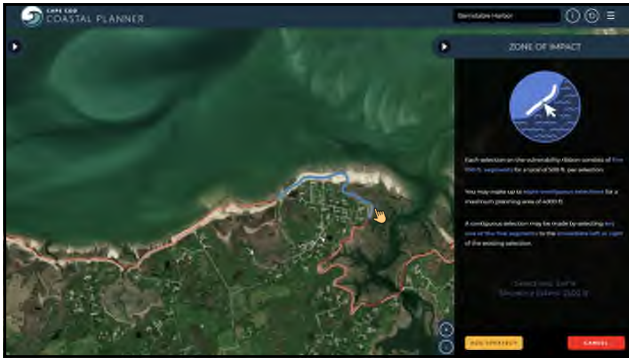
---

---

---

---

---




---

---

---

---

---

---

---

---




---

---

---

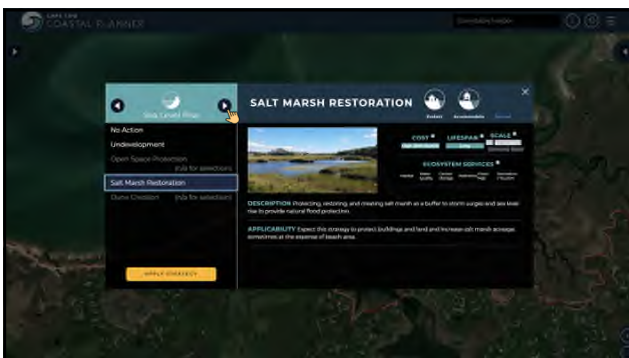
---

---

---

---

---




---

---

---

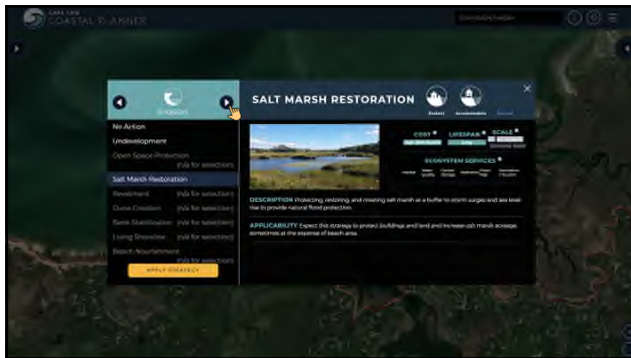
---

---

---

---

---




---

---

---

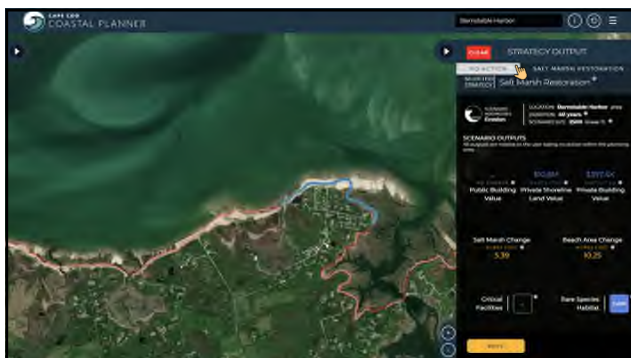
---

---

---

---

---




---

---

---

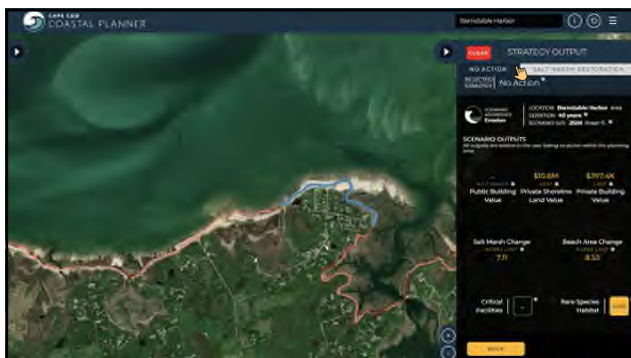
---

---

---

---

---




---

---

---

---

---

---

---

---



---

---

---

---

---

---

---



---

---

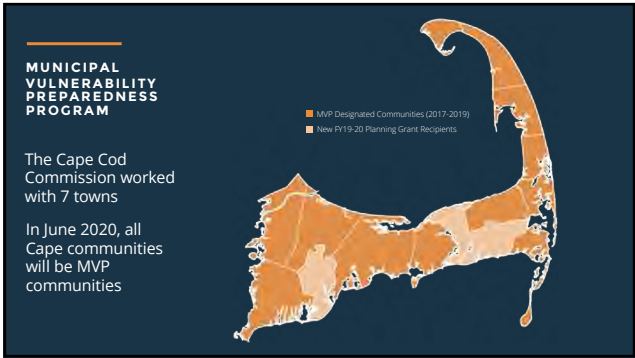
---

---

---

---

---



---

---


---

---

---

---

---



**MVP PROGRAM**

**Cape Cod  
Commission's  
Role**

- In 2019, CCC and County Cooperative Extension assisting 7 towns; Barnstable, Bourne, Eastham, Wellfleet, Truro, Dennis, and Harwich
- By June 2020, all 15 towns will have participated and will have access to state funding to implement identified actions

---

---

---

---

---

---

---

**COMMON  
CONCERNS**

*Low-lying  
Infrastructure*



---

---

---

---

---

---

---

**COMMON  
CONCERNS**

*People in  
harm's way*



---

---

---

---

---

---

---



COMMON CONCERNS

*Impacts to human health and safety*



---

---

---

---

---

---

---

COMMON CONCERNS

*Vulnerable utilities*



---

---

---

---

---

---

---

COMMON CONCERNS

*Threats to the environment*



---

---

---

---

---

---

---



COMMUNITY ACTIONS

Communities need to plan financially for short- and long-term strategies



---

---

---

---

---

---


---

---

BARNSTABLE PILOT PROJECT

Goal:  
Advance the Towns of Barnstable's resiliency planning efforts, improve property owner understanding of the coastal threats and extreme weather, identify and highlight the costs of doing nothing, as well as the costs and benefits of different adaptation scenarios.

- **Stakeholder Workshops** define potential damage and property loss; review planning layers; evaluate tradeoffs of taking no action
- **Test online tool** in its ability communicate resiliency issues and scenario assessments



---

---

---

---

---

---

---


---

Thank You

JENNIFER CLINTON  
JCLINTON@CAPECODCOMMISSION.ORG

OCTOBER 26, 2019





---

---

---

---

---

---

---

---