

Thursday, April 29, 2021

COVID-19 Command Center

Massachusetts Emergency Management Agency

Situation Update

The Command Center Situation Report is published weekly. The next report will be published on Thursday, 5/6/21.



In This Week's Report:

- Latest Data: Public Health & Vaccine Data Update
- Week in Review: Key State Actions
 - Baker Administration Announces Plans for Continued Reopening
 - Grassroots vaccine outreach reaches hard-hit communities
 - DPH, Emergency Management, and Disaster Recovery Updates
 - Holyoke and Chelsea Soldiers' Homes Weekly Update
 - New Communication Resources

Helpful Links:

- [COVID-19 Vaccine in Massachusetts](#)
- [Reopening Massachusetts](#)
- [FEMA COVID-19 Funeral Assistance](#)
- [Public Messaging Resources for Municipalities & Businesses](#)
- [Mass.gov/findfoodhelp](#)
- [Unemployment & COVID-19](#)
- [Massachusetts Emergency Management Agency](#)
- [COVID-19 Cost Eligibility and Tracking Guidance](#)



Situation in Numbers

Massachusetts **current as of 4/29**

644,688 Total Confirmed Cases ([click here for more information](#))

17,243 Deaths among confirmed cases

21,264,961 tests for the virus conducted to date by MA State Public Health Laboratory, hospitals, and commercial laboratories.

United States **Last Updated 4/29**

Case numbers are updated regularly at noon. Saturday/Sunday reports are preliminary and have not been confirmed with state/territorial health departments.

Total Cases Reported to CDC:

32,031,068 Total Cases

571,297 Deaths

57 Jurisdictions Reporting Cases (50 states, D.C., Puerto Rico, Guam, Northern Marianas, Marshall Islands, American Samoa, and US V.I.)

Social Distancing Basics:

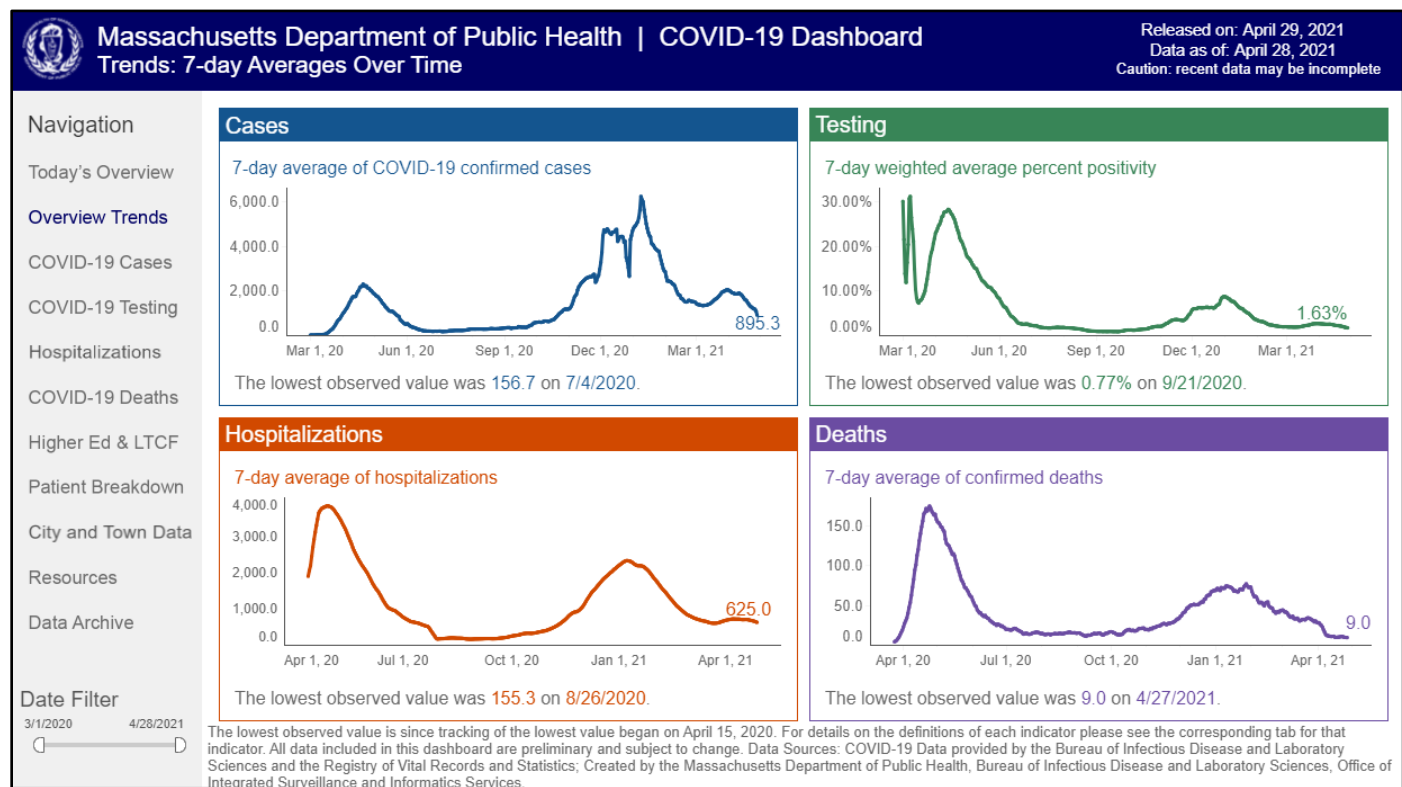
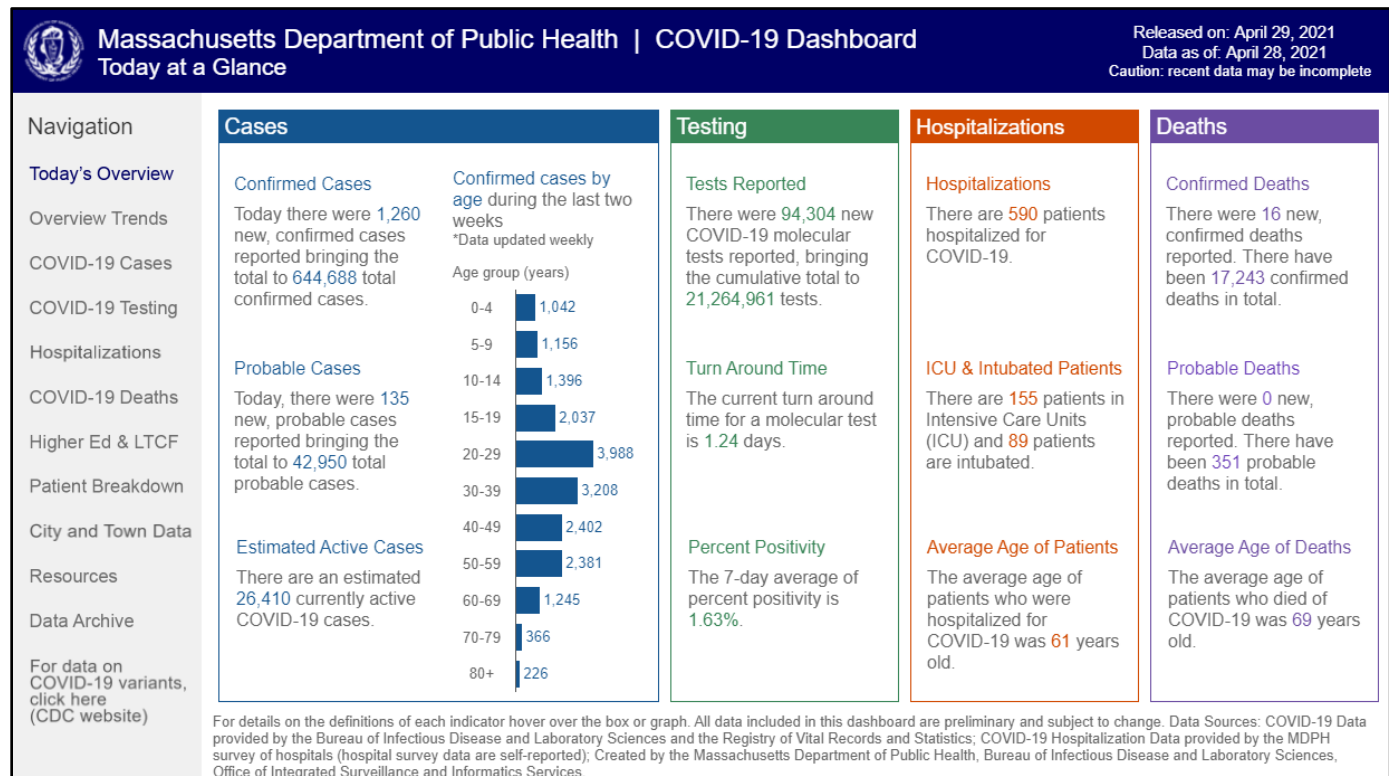
- ✓ Stay Home
- ✓ Call/Facetime/online chat with friends and loved ones.

If you go out for essential needs:

- ✓ Avoid crowds
- ✓ Stay 6 feet away from others
- ✓ Don't shake hands or hug
- ✓ Wear a face covering or mask.

COVID-19 RESPONSE COMMAND CENTER WEEKLY SITUATION REPORT

Latest Data: COVID-19 Public Health Update



COVID-19 RESPONSE COMMAND CENTER

WEEKLY SITUATION REPORT

Weekly Public Health Report:

The Command Center released the [Weekly Public Health Report](#) on Thursday, 4/29. The report primarily includes information related to cases and inspection data for Long Term Care Facilities. Data previously included in the Weekly Report, including town-level data, contact tracing information (including active COVID cluster information by Exposure Setting Type), are now presented in the [Daily Interactive Dashboard](#).

Vaccine Update: For a more detailed weekly breakdown, [visit the MA COVID-19 Vaccination Data webpage](#).

	4/23	4/24	4/25	4/26	4/27	4/28	4/29
DOSES SHIPPED							
Doses Shipped to MA Providers (MIIS)*	4,387,985	4,478,585	4,478,585	4,478,585	4,647,265	4,709,565	4,777,525
Doses Shipped to Pharmacies and Directly by the Federal Government - Including FPPP Providers (Tiberius)	2,134,165	2,169,265	2,172,775	2,173,775	2,179,475	2,248,675	2,367,535
Grand Total Shipped to MA	6,522,150	6,647,850	6,651,360	6,652,360	6,826,740	6,958,240	7,145,060
DOSES ADMINISTERED (MIIS)*							
1st Moderna or Pfizer Doses Administered # of people with at least one dose	3,271,029	3,323,355	3,361,789	3,390,158	3,433,305	3,476,146	3,518,215
2nd Moderna or Pfizer Doses Administered # of people fully vaccinated	2,027,572	2,077,812	2,117,009	2,145,176	2,189,037	2,230,836	2,273,711
Janssen (J&J) Doses Administered (MIIS) # of people fully vaccinated	204,489	204,580	204,652	204,851	204,976	205,251	206,203
Grand Total Doses Administered (MIIS)	5,503,090	5,605,747	5,683,450	5,740,185	5,827,318	5,912,233	5,998,129
Grand Total Fully Vaccinated People with Existing COVID-19 Vaccines**	2,232,061	2,282,392	2,321,661	2,350,027	2,394,013	2,436,087	2,479,914
% of Total Doses Shipped That Have Been Reported as Administered	84.4%	84.3%	85.4%	86.3%	85.4%	85.0%	83.9%

*Data from the Massachusetts Immunization Information System (MIIS) are as of midnight the night before.

**Fully vaccinated people have 2 doses of Moderna or Pfizer vaccine or 1 dose of Janssen (J&J) vaccine

MA Dose Allocation Update:

This week, the Commonwealth received 444,930 first and second doses as part of the state allocation. These figures do not include doses provided directly from the federal government to the Federal Retail Pharmacy Program, Federally Qualified Health Centers (FQHC) or Community Vaccination Center (CVC).

These numbers include a one-time shipment of 108,800 J&J vaccines.

This week, first doses and second dose state allocations (total doses), were distributed among providers as follows:

- Health systems and health care providers (excluding community health centers): 163,960
- Regional Collaboratives and Local Boards of Health: 118,230
- Mass vaccination locations: 115,890
- Community Health Centers state allocation only: 31,350
- Retail pharmacies (non-CVS) state allocation only: 4,500
- Mobile Clinics supporting long-term care facilities, congregate care, affordable/low-income senior housing, and homebound individuals: 10,000

Weekly allocations are subject to change based on federal availability, demand from providers, and obligations to meet second doses. Providers have 10 days to use their doses and must meet specific performance thresholds.

Federal Doses:

COVID-19 RESPONSE COMMAND CENTER WEEKLY SITUATION REPORT

In addition to the state allocation, the federal government has increased its distribution of vaccines to CVS Health sites as part of the Federal Retail Pharmacy Partnership as well as to certain Massachusetts federally qualified community health centers. These quantities fluctuate on a weekly basis and are not counted as part of the state's weekly allocation but represent an increasing allocation to selected locations.

This week, 254,490 first and second doses were allocated to the retail pharmacy program.

23 FQHCs received 88,400 doses directly from the Federal Government.

The Community Vaccination Clinic at the Hynes Convention Center was allocated 42,120 doses.

Week in Review: State Actions

Baker Administration Announces Plans for Continued Reopening:

On Tuesday, April 27th, the Baker-Polito Administration announced that Massachusetts will reopen some outdoor Phase 4, Step 2 industries effective May 10th and put plans in place for further reopening on May 29th and August 1st. The Administration continues to take steps to reopen the Commonwealth's economy with public health metrics continuing to trend in a positive direction. This includes drops in average daily COVID cases and hospitalizations.

Massachusetts remains first in the nation for first vaccine doses and total doses administered per capita, among states with more than 5 million people. The Administration will also relax the Face Coverings Order for some outdoor settings, effective April 30th.



Phase IV, Step 2 Industries and Gathering Changes:

On March 22, Massachusetts loosened capacity restrictions and advanced to Step 1 of Phase IV of the reopening plan. Since then, case rates dropped by 20%. The positivity rate has dropped to the lowest levels recorded since last summer.

Effective Monday, May 10th:

Large venues such as indoor and outdoor stadiums, arenas, and ballparks currently open as part of Phase 4, Step 1 at 12% will be permitted to increase capacity to 25%.

The Commonwealth will reopen some outdoor Phase 4, Step 2 industries including amusement parks, theme parks and outdoor water parks that will be permitted to operate at a 50% capacity after submitting safety plans to the Department of Public Health.

Road races and other large, outdoor organized amateur or professional group athletic events will be permitted to take place with staggered starts after submitting safety plans to a local board of health or the DPH.

Youth and adult amateur sports tournaments will be allowed for moderate and high-risk sports.

Singing will also be permitted indoors with strict distancing requirements at performance venues, restaurants, event venues and other businesses.

COVID-19 RESPONSE COMMAND CENTER WEEKLY SITUATION REPORT

Effective May 29th:

Subject to public health and vaccination data, gathering limits will increase to 200 people indoors and 250 people outdoors for event venues, public settings, and private settings.

Subject to public health and vaccination data, additional Phase 4, Step 2 industries will be permitted to open including:

- Street festivals, parades, and agricultural festivals, at 50% of their previous capacity and after submitting safety plans to the local board of health.
- Bars, beer gardens, breweries, wineries, and distilleries, will be subject to restaurant rules with seated service only, a 90-minute limit and no dance floors.

Subject to public health and vaccination data, the restaurant guidance will be updated to eliminate the requirement that food be served with alcohol and to increase the maximum table size to 10.

Effective August 1st:

Subject to public health and vaccination data, remaining industries will be permitted to open including:

- Dance clubs, and nightclubs
- Saunas, hot-tubs, steam rooms at fitness centers, health clubs and other facilities
- Indoor water parks
- Ball pits

All industry restrictions will be lifted at that time, and capacity will increase to 100% for all industries, with businesses encouraged to continue following best practices. The gathering limit will be rescinded.

Depending on vaccine distribution and public health data, the Administration may consider re-evaluating the August 1st date.

The Department of Public Health will also continue to issue guidance as needed, including guidance to still require masks indoors.

Face Coverings Order:

Effective April 30th, the Face Coverings Order will be relaxed for some outdoor settings.

Face coverings will only be required outside in public when it is not possible to socially distance, and at other times required by sector-specific guidance.

Face coverings will still be required at all times in indoor public places. Face coverings will also continue to be required at all times at events, whether held indoors or outdoors and whether held in a public space or private home, except for when eating or drinking.

At smaller gatherings in private homes, face coverings are recommended but not required. The \$300 fine as an enforcement mechanism will be eliminated.

Right: This week, Governor Baker received his 2nd dose of COVID-19 vaccine at the Hynes Convention Center vaccination site, operated by CIC Health and home to the FEMA Community Vaccination Center, which is supported personnel from the U.S. Navy, the Defense Department, and FEMA. The Governor reports that he felt “pretty good...just a little tired” after getting the shot and urges all residents to get vaccinated by visiting [Mass.Gov/COVIDvaccine](https://www.mass.gov/COVIDvaccine).



COVID-19 RESPONSE COMMAND CENTER WEEKLY SITUATION REPORT

Grassroots vaccine outreach reaches tens of thousands in hard-hit communities:

A core piece of the Commonwealth's Vaccine Equity Initiative is reaching out and providing access to vaccine to residents who live in 20 communities hardest hit by COVID-19. In a few communities, opportunities are offered to get vaccinated at local sites such as neighborhood markets, barber shops, nail and hair salons, restaurants, and other locations, making it easier for residents to get vaccinated where and when they want.

DPH's Mobile Vaccination Program has supported 57 community-based vaccination clinics in Boston, Chelsea, Brockton, Leominster, and Lowell. These efforts are in addition to the mobile vaccine program made possible because of the FEMA Community Vaccination Center operating at the Hynes Convention Center. Last week alone, mobile providers held more than a dozen clinics and administered over 7,000 vaccinations. Community grants have supported wide distribution of multilingual vaccine materials using creative methods such as including in food boxes distributed to residents.



A Vaccine Equity Initiative canvasser hard at work last week in the city of Everett.

To bolster this effort on the ground, trained canvassers have gone door-to-door to share information, answer questions, and in some cases register individuals for vaccination appointments. Last week, canvassers knocked on more than 26,000 doors and made more than 5,000 phone calls to help people get vaccinated.

[The Vaccine Equity Initiative website](#) has been expanded and is now updated weekly, including a [specific page](#) to reflect outreach work done with Tribes, Native Americans, Alaskan Natives, Pacific Islanders, Native Hawaiians, and Indigenous Peoples. The goal is to provide resources and culturally relevant outreach, education and mitigate barriers to accessing vaccines.

Activity Type	Completed Week Ending April 25th	Cumulative Since Activities Began
Doors Knocked	26,481	51,729
Phone Calls Made	5,364	17,146
Number of One-On-One Conversations	7,967	16,944
Number of Visibility & Outreach Events	137	335
Materials Disseminated	6,389	11,073

COVID-19 RESPONSE COMMAND CENTER
WEEKLY SITUATION REPORT

Important Updates

Department of Public Health Updates:

- **Findings from the DPH Community Impact Survey:** Seven out of 10 Massachusetts workers experienced disruptions to their employment due to the COVID pandemic, including 10 percent who lost their jobs. New findings regarding employment were released yesterday from our DPH Community Impact Survey. Find them here: <http://mass.gov/CovidSurvey>.
- **Trusted Sources PSA:** We have been recruiting a variety of spokespeople to publicly support COVID vaccination. In our latest video, Dr. Sharma Joseph, Tufts Medical Center, says, "No steps were skipped in the development of these vaccines. They're all highly effective at keeping you out of the hospital and keeping you alive."
- DPH Epidemiology Line handled 273 COVID-19 calls and 92 non-COVID-19 calls for a total of 365 calls from 4/19 through 4/25.
- As of 4/28, the [Academic Public Health Volunteer Corps](#) has 313 volunteers supporting 36 local boards of health.
- MA211 received 8,206 calls from Monday 4/12 through Sunday 4/25 for a new total of 291,634.
- All HMCC Regions are at Tier 2 status, in accordance with the [DPH COVID-19 Resurgence Planning and Response Guidance for Acute Care Hospitals](#). DPH and the COVID-19 Command Center will continue to work closely with all regions to monitor hospital capacity statewide.
- There are currently 3 Rapid Response Teams, comprised of nursing staff, deployed to nursing homes across the Commonwealth. Teams are also administering second doses of Pfizer vaccine to nursing and rest home residents as well as Homebound individuals. The team resumed vaccination on Tuesday, April 26th using Janssen vaccine at nursing homes and rest homes that have a high number of residents that are unvaccinated while awaiting further recommendations.

Findings from the DPH Community Impact Survey. Seven out of 10 Massachusetts workers experienced disruptions to their employment due to the COVID pandemic, including 10 percent who lost their jobs. New findings regarding employment were released yesterday from our DPH Community Impact Survey. Find them here: <http://mass.gov/CovidSurvey>.



Emergency Management and Disaster Recovery Updates:

Mass Care

- One state contracted isolation/recovery hotel in the City of Everett continues to receive client placements. 68 individuals are currently housed in the program.
 - Top 5 referring cities:
 - Boston (453)
 - Worcester (198)
 - Springfield (191)
 - Quincy (127)
 - Cambridge (120)
 - To date, a total of 2,408 residents have been placed in these hotels for safe isolation and recovery, an increase of 39 since last week.

Community Food Box Program Update 4/23-4/30:

MEMA is partnering with the Salvation Army, and a vendor, to bring in shelf-stable food boxes each week to support communities in their effort to deliver food to individuals and families in quarantine and isolation who require assistance accessing food. **The last date of delivery is scheduled for April 30. While no more food boxes**

COVID-19 RESPONSE COMMAND CENTER WEEKLY SITUATION REPORT

will be delivered to MEMA's warehouse after 4/30, distribution of food boxes will continue until inventory is depleted. Each week MEMA's warehouse receives a delivery of shelf-stable food boxes. Distribution of food boxes is coordinated between MEMA and communities in need. The table below reflects the current food box inventory and number of food boxes distributed to communities during the weekly reporting period (data is updated every Friday).

Total Number of Food Boxes in MEMA's Inventory	Total Number of Food Boxes Distributed to One or More Local Communities During the Reporting Period	Total Number of Communities that Received Food Boxes During the Reporting Period
4,558	812	3

Grocery Card Distribution Program Update 4/21-4/30:

As an extension of the isolation and quarantine food program, the Food Security Task Force has begun coordinating the distribution of grocery cards in addition to or in lieu of shelf-stable food boxes. These grocery cards allow individuals to have greater flexibility of food options and help accommodate unique dietary needs and cultural food preferences.

Store Name	Number of Cards Distributed During the Reporting Period	Total Value of Cards
Stop & Shop	266	\$26,600
Market Basket	184	\$9,200
Total Number of Communities Receiving Cards: 7		

Logistics (including Personal Protective Equipment and Supplies)

- 85 orders prepared for pickup or delivery from the MEMA State Logistics warehouse from 4/23-4/29.
 - As part of these orders, Mass Vaccination Sites, MDPH Community Health Centers, MDPH Community Grant Programs, and Command Center Vaccine Equity Programs are being supported
 - Orders are also being processed to support Housing Authorities and School Districts across the Commonwealth
- DPH coordinated 10 deliveries to health care entities on Tuesday (4/27) (10 BinaxNOW kits); 13 deliveries were made on Thursday (4/29) (1 PPE and 12 BinaxNOW kits) and 4 deliveries have been scheduled for Friday (4/30) (4 BinaxNOW kits).

Disaster Recovery

On March 27, 2020, the President [declared](#) a Major Disaster Declaration for the Commonwealth of Massachusetts related to the COVID-19 pandemic response. Through this declaration, federal aid will be made available to cities and towns, state agencies, and certain non-profits in all Massachusetts counties to help pay for emergency protective measures (response costs) related to the COVID-19 pandemic. MEMA's Recovery Unit has developed a [webpage](#) with information and guidance on, but not limited to, disaster declaration, eligibility criteria, and the application process. Highlights from the Disaster Recovery process include the following:

COVID-19 RESPONSE COMMAND CENTER

WEEKLY SITUATION REPORT

Data as of: 4/23/2021

MEMA COVID-19 EXECUTIVE DASHBOARD			
AGGREGATE PROGRAM VIEW			
<i>Note: Financial data for pre-submission projects reflect 100% federal cost share while submitted projects continue to reflect 75% federal cost share. The remaining 25% federal cost share for submitted projects will be reported as FEMA adjusts cost share for these projects on a rolling basis. In addition, figures do not include MEMA management cost allowance.</i>			
Overall (Best Available Estimate)	Submitted (Eligibility & Cost Review)	Approved* (by FEMA)	Paid (by MEMA)
\$1.4B -\$7.02M	\$1.2B -\$9.12M	\$663.3M +\$42.63M	\$299.2M +\$4.68M
1,018 Projects +9	708 Projects +2	227 Projects +12	149 Projects +15
Approved Applicants: 657			

- FEMA RPA Requests: 665 (+1)
- Technical Assistant Requests: 524
- FEMA extended the period of authorization for Emergency Feeding under major disaster declaration FEMA-4496-DR-MA until May 26, 2021.
- Conducted FEMA eligibility webinar for Institutions of Higher Education on April 26th. Presentation materials will be uploaded to the MEMA website ([webinar page](#)) by the end of the week.
- Reviewing appeals process with 5 applicants that received FEMA eligibility Determination Memos in April 2021.
- Initiating outreach efforts to 32 municipalities that have not submitted Requests for Public Assistance (RPA) for the COVID-19 disaster.
- Final kickoff with entities supporting a regional COVID-19 vaccination site scheduled for April 30, to review the FEMA Public Assistance process.
- New project obligations (11): \$20,374,832.60

Funeral Assistance

FEMA began processing applications for funeral assistance starting on 4/12. FEMA will provide financial assistance for COVID-19-related funeral expenses incurred after January 20, 2020 ([learn more here](#)).

FEMA COVID Funeral Assistance Program registration as of 4/28/21:

Disaster	State	Registrations	In Process	Eligible	Award Amount	Withdrawn	Ineligible
4496	MA	3,221	3,221	0	0	\$0.00	0

Holyoke and Chelsea Soldiers' Homes Update:

NOTE: The Soldiers' Homes are continuing regular reporting on the status of COVID-19 cases at the facilities but are transitioning the weekly reporting to the EOHHS State Facility Dashboard which is published every Wednesday afternoon. Cases will be reported weekly each Wednesday [on this dashboard](#).

COVID-19 RESPONSE COMMAND CENTER WEEKLY SITUATION REPORT

Communications Resources

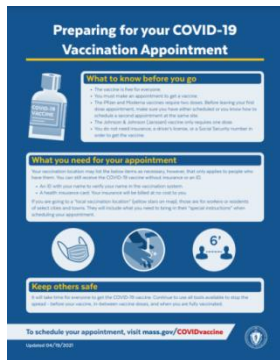
New 'Trusted Sources' PSA

We have been recruiting a variety of spokespeople to publicly support COVID vaccination. In our latest video, Dr. Sharma Joseph, Tufts Medical Center, says, "No steps were skipped in the development of these vaccines. They're all highly effective at keeping you out of the hospital and keeping you alive." Please share [this link](#) on your social media with hashtag #TrustTheFacts.



New Increasing COVID-19 Vaccine Uptake Among Members of Racial and Ethnic Minority Communities

This CDC [guide](#) includes strategies, interventions, and ready-made messages and materials, as well as information on how to connect with others to increase COVID-19 vaccination confidence and access in racial and ethnic minority communities.



Reminder Flyer: Preparing for your Vaccine Appointment

This is a good handout to explain what you need to know before you head to your vaccine appointment, including the fact that the vaccine is free for everyone and you don't need insurance, a driver's license, or a Social Security number. Download and share [this flyer](#) in your outreach.

Guidance for people who are fully vaccinated against COVID-19

- Until more people are vaccinated, prevention measures will be necessary, even for individuals fully vaccinated. Review MA's [Guidance for people who are fully vaccinated against COVID-19](#).

CDC 'plain language' materials in multiple languages

- [Facts about COVID-19 Vaccines](#)
- [Communication Resources for COVID-19 Vaccines](#)
- [Myths and Facts about COVID-19 Vaccines](#)
- [Benefits of Getting a COVID-19 Vaccine](#)

Other Public Messaging Resources for Communities:

The COVID-19 Command Center and DPH have produced many communication resources aimed at helping communities inform and educate residents on recent executive orders and guidance related to COVID-19.

- [Trust the Facts, Get the Vax Campaign Materials | Mass.gov](#)
- [COVID-19 Vaccine Posters | Mass.gov](#)
- [Preparing for your COVID-19 Vaccination Appointment flier | Mass.gov](#)
- [Guide to hosting a forum on the COVID-19 Vaccine | Mass.gov](#)

COVID-19 RESPONSE COMMAND CENTER WEEKLY SITUATION REPORT

Resources

MassSupport

MassSupport is the Massachusetts Crisis Counseling Program funded by the Federal Emergency Management Agency and managed in partnership between the Massachusetts Department of Mental Health and Riverside Trauma Center, a program of Riverside Community Care. Contact MassSupport by phone at **888-215-4920** or by email at MassSupport@riversidecc.org

Red Cross Virtual Family Assistance Center

In order to provide support to families and communities who have suffered loss as a result of the COVID-19 pandemic, the American Red Cross has developed a Virtual Family Assistance Center (VFAC), staffed by a team of specially trained mental health, spiritual care, and health services volunteers who are:

- Connecting with families over the phone to offer condolences, emotional and spiritual support, and access to available resources
- Providing support for virtual memorial services for families, including connecting with local faith-based community partners
- Hosting online classes to foster resilience and facilitate coping skills
- Assisting families with access to national, state, or local resources such as grief counseling, legal resources, funeral information, financial information services, or veterans' assistance
- Additional state- and local-specific resources are available.

People can visit: <https://www.redcross.org/virtual-family-assistance-center/ma-family-assistance-center.html> to access this resource with special virtual programs, information, referrals, and services to support families in need. People without internet access can **call toll-free 833-492-0094** for help. All Family Assistance Center support will be provided virtually and is completely confidential and free.

Department of Elementary and Secondary Education

The Department of Elementary and Secondary Education (DESE) now reports on the number of positive COVID-19 cases as reported to the DESE by school districts (including charter schools), collaboratives, and approved special education schools. The data only represents what has been reported to DESE. For more information and to view the report people can visit: <http://www.doe.mass.edu/covid19/positive-cases/>

COVID-19 Test Site Locator

MEMA, in conjunction with the COVID-19 Command Center, has developed an [interactive tool](#) that shows the locations of COVID-19 testing sites around the Commonwealth.

Massachusetts COVID-19 Response Dashboard

MEMA has developed and maintains a public-facing COVID-19 ArcGIS Online dashboard, available [here](#). This dashboard is continuously updated and captures information about current COVID 19 case counts, cases by age, cases by county, hospital status, hospital bed status, death tolls, and deaths by age. Users should refresh the dashboard daily as enhancements are continuously being added.

Health care facilities can learn more about [requesting personal protective equipment here](#).

Stay Informed

- Get information from trusted sources. Get notified by text, email, or phone call in your preferred language. Visit <https://member.everbridge.net/index/406686158291020/#/signup> to sign-up for **AlertsMA** for the latest news on the Commonwealth's response to COVID-19

COVID-19 RESPONSE COMMAND CENTER WEEKLY SITUATION REPORT

- Take care of your emotional health:
- Call 2-1-1 and choose the “CALL2TALK” option.
- Samaritans is continuing operations 24/7, as always. During this unprecedented time, it can feel overwhelming to receive constant messages about COVID-19. Call or text their 24/7 helpline any time at 877-870-4673.
- The Disaster Distress Helpline, 1-800-985-5990, is a 24/7, 365-day-a-year, national hotline dedicated to providing immediate crisis counseling for people who are experiencing emotional distress related to any natural or human-caused disaster, including disease outbreaks like COVID-19. This toll-free, multilingual, and confidential crisis support service is available to all residents in the United States and its territories.

How to Help Out

- [Donate](#) to the Massachusetts COVID-19 Relief Fund

The Need for Blood Donations Continues, and Recovered COVID-19 Donors Can Help Save Lives

In coordination with the U.S. Food and Drug Administration (FDA), the Red Cross is seeking people who are fully recovered from the new coronavirus to sign up to donate plasma to help current COVID-19 patients. People who have fully recovered from COVID-19 have antibodies in their plasma that can attack the virus. This convalescent plasma is being evaluated as treatment for patients with serious or immediately life-threatening COVID-19 infections, or those judged by a healthcare provider to be at high risk of progression to severe or life-threatening condition. Interested individuals can visit [RedCrossBlood.org/plasma4covid](https://www.RedCrossBlood.org/plasma4covid) to learn more. The Red Cross follows the highest standards of safety and infection control, and volunteer donors are the only source of blood for those in need. To make an appointment to donate, please visit www.RedCrossBlood.org